

# School Realities 2

Published September 2012  
ISBN: 978-1-4315-0785-6  
Enquiries: 012 357 3676

In 2012, there were 12 428 069 learners in ordinary public and independent schools (hereinafter collectively referred to as ordinary schools) in South Africa, who attended 25 826 schools and were served by 425 167 educators (see Tables 2 and 3). These data are from the survey conducted on the 10th school day. Approximately 99.7% of functional ordinary schools submitted the survey forms, and imputation was done to establish a data set of 100%. The figures in this publication are preliminary, and the final figures will be published in the more comprehensive *Education Statistics in South Africa 2012*.

**Table 1: List of abbreviations**

<b>ECD</b> Early Childhood Development	<b>LER</b> Learner-Educator Ratio
<b>ESR</b> Educator-School Ratio	<b>LSR</b> Learner-School Ratio
<b>FET</b> Further Education and Training	<b>SGB</b> School Governing Body
<b>GET</b> General Education and Training	<b>SNE</b> Special Needs Education

**Table 2: Number of learners, educators and schools in the ordinary school sector, by province, in 2012**

Province	Public			Independent			Public and Independent					
	Learners	Educators	Schools	Learners	Educators	Schools	Learners	As % of National Total	Educators	As % of National Total	Schools	As % of National Total
Eastern Cape	1 886 982	64 809	5 558	64 541	3 127	196	1 951 523	15.7	67 936	16.0	5 754	22.3
Free State	646 093	23 854	1 351	15 881	974	68	661 974	5.3	24 828	5.8	1 419	5.5
Gauteng	1 858 745	59 175	2 045	216 642	14 785	566	2 075 387	16.7	73 960	17.4	2 611	10.1
KwaZulu-Natal	2 812 844	90 251	5 955	65 125	4 681	221	2 877 969	23.2	94 932	22.3	6 176	23.9
Limpopo	1 665 013	55 277	3 935	50 765	2 393	143	1 715 778	13.8	57 670	13.6	4 078	15.8
Mpumalanga	1 027 851	33 059	1 807	26 932	1 605	113	1 054 783	8.5	34 664	8.2	1 920	7.4
Northern Cape	274 189	8 632	560	3 305	232	20	277 494	2.2	8 864	2.1	580	2.2
North West	760 272	24 881	1 591	14 870	1 043	54	775 142	6.2	25 924	6.1	1 645	6.4
Western Cape	991 685	32 439	1 453	46 334	3 950	190	1 038 019	8.4	36 389	8.6	1 643	6.4
South Africa	11 923 674	392 377	24 255	504 395	32 790	1 571	12 428 069	100.0	425 167	100.0	25 826	100.0

Table 2 shows the number of ordinary public and independent schools, learners and educators there were in 2012. It further shows that the highest and lowest percentages of learners, educators and schools in the ordinary school sector occurred in KwaZulu-Natal and the Northern Cape, respectively. Majority of independent schools were situated in Gauteng (566) followed by KwaZulu-Natal with 221 schools.

**Table 3: Number of learners, educators and schools in the ordinary school sector, by province, from 2010 to 2012**

Province	Learners			Educators			Schools		
	2010	2011	2012	2010	2011	2012	2010	2011	2012
Eastern Cape	2 052 386	1 963 578	1 951 523	69 018	68 499	67 936	5 742	5 755	5 754
Free State	654 704	658 010	661 974	23 850	24 057	24 828	1 488	1 437	1 419
Gauteng	1 974 066	2 022 050	2 075 387	70 340	71 532	73 960	2 485	2 559	2 611
KwaZulu-Natal	2 806 988	2 847 378	2 877 969	91 926	93 266	94 932	6 147	6 180	6 176
Limpopo	1 706 401	1 695 524	1 715 778	58 194	58 016	57 670	4 106	4 073	4 078
Mpumalanga	1 036 432	1 046 551	1 054 783	34 575	34 623	34 664	1 939	1 931	1 920
Northern Cape	269 392	274 745	277 494	8 846	8 899	8 864	617	611	580
North West	759 114	765 120	775 142	26 006	25 897	25 924	1 701	1 669	1 645
Western Cape	1 000 616	1 015 038	1 038 019	35 354	35 819	36 389	1 625	1 636	1 643
South Africa	12 260 099	12 287 994	12 428 069	418 109	420 608	425 167	25 850	25 851	25 826

Sources:

2010: As published in Education Statistics in South Africa 2010.

2011: As published in School Realities 2011.

Note 1: Final learners figure for Gauteng province, in 2011 has increased slightly compared with the preliminary figure published

From the figures reflected in Table 3 it can be deduced that, from 2010 to 2012, the number of learners and educators nationally increased by 1.4% and 1.7%, respectively, while the number of schools decreased by 0.1%. The Eastern Cape is the only province that experienced a drop in learner and educator numbers.



# E M I S

**Table 4: Number of learners in ordinary schools, by province, sector, gender and grade, in 2012**

Province	Sector	Gender	Pre-Grade R Phase	GET Band												Total (GET Band)	
				Foundation Phase					Intermediate Phase				Senior Phase				
				Pre-Gr. R	Gr. R	Gr. 1	Gr. 2	Gr. 3	Total	Gr. 4	Gr. 5	Gr. 6	Total	Gr. 7	Gr. 8		Gr. 9
Eastern Cape	Independent	Female	1 030	2 378	3 244	2 919	2 642	11 183	2 447	2 123	2 125	6 695	2 017	1 994	2 125	6 136	24 014
		Total	2 077	4 827	6 647	5 743	5 273	22 490	4 934	4 380	4 227	13 541	4 034	3 917	4 063	12 014	48 045
	Public	Female	5 470	75 769	93 550	81 607	73 756	324 682	71 488	69 643	68 678	209 809	69 271	70 378	71 883	211 532	746 023
		Total	10 609	153 536	197 864	170 250	153 981	675 631	151 816	146 605	143 291	441 712	141 777	140 387	142 634	424 798	1 542 141
	Both	Female	6 500	78 147	96 794	84 526	76 398	335 865	73 935	71 766	70 803	216 504	71 288	72 372	74 008	217 668	770 037
		Total	12 686	158 363	204 511	175 993	159 254	698 121	156 750	150 985	147 518	455 253	145 811	144 304	146 697	436 812	1 590 186
Free State	Independent	Female	208	394	688	666	569	2 317	541	511	490	1 542	528	687	769	1 984	5 843
		Total	442	828	1 495	1 355	1 154	4 832	1 086	1 128	959	3 173	1 022	1 350	1 531	3 903	11 908
	Public	Female	305	14 703	30 725	28 353	25 081	98 862	25 211	24 664	24 667	74 542	22 954	24 270	32 268	79 492	252 896
		Total	566	29 811	64 366	58 641	51 574	204 392	52 565	50 688	50 253	153 506	46 224	49 580	66 370	162 174	520 072
	Both	Female	513	15 097	31 413	29 019	25 650	101 179	25 752	25 175	25 157	76 084	23 482	24 957	33 037	81 476	258 739
		Total	1 008	30 639	65 861	59 996	52 728	209 224	53 651	51 816	51 212	156 679	47 246	50 930	67 901	166 077	531 980
Gauteng	Independent	Female	3 690	5 994	10 582	9 387	8 389	34 352	7 842	7 375	7 068	22 285	7 010	8 364	8 226	23 600	80 237
		Total	7 450	12 066	21 108	18 697	16 809	68 680	15 705	14 792	13 986	44 483	13 660	16 068	15 990	45 718	158 881
	Public	Female	2 719	41 464	89 383	82 262	75 785	288 894	72 936	71 159	70 764	214 859	69 677	71 695	78 983	220 355	724 108
		Total	5 411	83 308	185 550	167 614	154 026	590 498	147 187	143 527	141 516	432 230	138 884	144 348	160 083	443 315	1 466 043
	Both	Female	6 409	47 458	99 965	91 649	84 174	323 246	80 778	78 534	77 832	237 144	76 687	80 059	87 209	243 955	804 345
		Total	12 861	95 374	206 658	186 311	170 835	659 178	162 892	158 319	155 502	476 713	152 544	160 416	176 073	489 033	1 624 924
KwaZulu-Natal	Independent	Female	1 609	1 993	2 601	2 394	2 152	9 140	2 126	1 994	1 839	5 959	1 868	2 564	2 558	6 990	22 089
		Total	3 144	4 106	5 213	4 662	4 212	18 193	4 026	3 803	3 634	11 463	3 550	4 995	4 874	13 419	43 075
	Public	Female	4 298	91 745	128 932	113 323	101 030	435 030	99 786	99 345	101 161	300 292	101 179	112 061	115 396	328 636	1 063 958
		Total	8 456	185 063	272 018	234 276	208 944	900 301	209 209	205 498	207 156	621 863	205 613	231 374	233 746	670 733	2 192 897
	Both	Female	5 907	93 738	131 533	115 717	103 182	444 170	101 912	101 339	103 000	306 251	103 047	114 625	117 954	335 626	1 086 047
		Total	11 600	189 169	277 231	238 938	213 156	918 494	213 235	209 301	210 790	633 326	209 163	236 369	238 620	684 152	2 235 972
Limpopo	Independent	Female	441	1 701	2 225	2 045	1 829	7 800	1 896	1 669	1 730	5 295	1 619	2 292	2 391	6 302	19 397
		Total	877	3 296	4 403	4 137	3 729	15 565	3 691	3 388	3 462	10 541	3 247	4 323	4 549	12 119	38 225
	Public	Female	179	57 051	66 768	62 609	54 996	241 424	56 014	55 264	58 054	169 332	57 734	60 908	88 926	207 568	618 324
		Total	383	114 654	137 952	129 015	113 805	495 426	118 050	116 132	120 777	354 959	117 770	124 975	190 178	432 923	1 283 308
	Both	Female	620	58 752	68 993	64 654	56 825	249 224	57 910	56 933	59 784	174 627	59 353	63 200	91 317	213 870	637 721
		Total	1 260	117 950	142 355	133 152	117 534	510 991	121 741	119 520	124 239	365 500	121 017	129 298	194 727	445 042	1 321 533
Mpumalanga	Independent	Female	451	862	1 256	1 125	990	4 233	859	848	829	2 536	844	808	843	2 495	9 264
		Total	915	1 857	2 628	2 290	1 987	8 762	1 750	1 731	1 618	5 099	1 579	1 657	1 662	4 898	18 759
	Public	Female	1 266	28 572	46 362	41 915	37 168	154 017	37 279	37 571	38 584	113 434	38 193	43 104	43 689	124 986	392 437
		Total	2 512	57 345	98 573	87 424	77 718	321 060	79 014	78 766	78 825	236 605	77 805	87 863	86 867	252 535	810 200
	Both	Female	1 717	29 434	47 618	43 040	38 158	158 250	38 138	38 419	39 413	115 970	39 037	43 912	44 532	127 481	401 701
		Total	3 427	59 202	101 201	89 714	79 705	329 822	80 764	80 497	80 443	241 704	79 384	89 520	88 529	257 433	828 959
Northern Cape	Independent	Female	77	133	153	111	109	506	71	77	55	203	78	215	212	505	1 214
		Total	155	285	311	226	205	1 027	153	146	111	410	145	353	333	831	2 268
	Public	Female	463	7 379	13 212	11 727	11 262	43 580	11 477	11 362	11 487	34 326	10 498	10 929	11 351	32 778	110 684
		Total	919	14 751	27 736	24 367	23 266	90 120	24 139	23 253	23 210	70 602	21 263	22 164	22 746	66 173	226 895
	Both	Female	540	7 512	13 365	11 838	11 371	44 086	11 548	11 439	11 542	34 529	10 576	11 144	11 563	33 283	111 898
		Total	1 074	15 036	28 047	24 593	23 471	91 147	24 292	23 399	23 321	71 012	21 408	22 517	23 079	67 004	229 163
North West	Independent	Female	99	616	750	674	651	2 691	560	524	543	1 627	517	517	510	1 544	5 862
		Total	211	1 230	1 586	1 450	1 279	5 545	1 134	1 053	982	3 169	1 023	1 037	1 056	3 116	11 830
	Public	Female	152	21 550	35 634	34 942	31 337	123 463	31 195	29 893	29 682	90 770	27 350	28 421	31 681	87 452	301 685
		Total	316	43 259	74 340	72 345	64 665	254 609	64 973	61 152	60 075	186 200	55 528	57 215	64 246	176 989	617 798
	Both	Female	251	22 166	36 384	35 616	31 988	126 154	31 755	30 417	30 225	92 397	27 867	28 938	32 191	88 996	307 547
		Total	527	44 489	75 926	73 795	65 944	260 154	66 107	62 205	61 057	189 369	56 551	58 252	65 302	180 105	629 628
Western Cape	Independent	Female	1 320	1 799	2 042	1 918	1 692	7 451	1 572	1 541	1 490	4 603	1 464	1 626	1 823	4 913	16 967
		Total	2 479	3 524	4 118	3 657	3 425	14 724	3 113	3 094	3 015	9 222	2 943	3 221	3 526	9 690	33 636
	Public	Female	554	26 958	49 376	43 660	40 279	160 273	40 661	39 216	39 230	119 107	38 802	39 229	47 673	125 704	405 084
		Total	1 148	54 119	103 065	88 639	81 321	327 144	83 804	79 889	78 349	242 042	76 461	76 682	91 659	244 802	813 988
	Both	Female	1 874	28 757	51 418	45 578	41 971	167 724	42 233	40 757	40 720	123 710	40 266	40 855	49 496	130 617	422 051
		Total	3 627	57 643	107 183	92 296	84 746	341 868	86 917	82 983	81 364	251 264	79 404	79 903	95 185	254 492	847 624
South Africa	Independent	Female	8 925	15 870	23 541	21 239	19 023	79 673	17 914	16 662	16 169	50 745	15 945	19 067	19 457	54 469	184 887
		Total	17 750	32 019	47 509	42 217	38 073	159 818	35 592	33 515	31 994	101 101	31 203	36 921	37 584	105 739	366 627
	Public	Female	15 406	365 191	553 942	500 398	450 694	1 870 225	446 047	438 117	442 307	1 326 471	435 658	460 995	521 850	1 418 503	4 615 199
		Total	30 320	735 846	1 161 464	1 032 571	929 300	3 859 181	930 757	905 510	903 452	2 739 719	881 325	934 588	1 058 529	2 874 442	9 473 342
	Both	Female	24 331	381 061	577 483	521 637	469 717	1 949 898	463 961	454 779	458 476	1 377 216	451 603	480 062	541 307	1 472 972	4 800 086
		Total	48 070	767 865	1 208 973	1 074 788	967 373	4 018 999	966 349	939 025	935 446	2 840 820	912 528	971 509	1 096 113	2 980 150	9 839 969

# E M I S

**Table 4: Number of learners in ordinary schools, by province, school sector, gender and grade, in 2012 (Concluded)**

Province	Sector	Gender	FET Band				Other 1)	Total Primary (Gr. 1-7)	Total Secondary (Gr. 8-12)	Total (Gr. 1-12)	Grand Total
			Gr. 10	Gr. 11	Gr. 12	Total					
Eastern Cape	Independent	Female	2 411	2 544	2 711	7 666	255	17 517	11 785	29 302	32 965
		Total	4 522	4 584	4 837	13 943	476	35 238	21 923	57 161	64 541
	Public	Female	77 007	67 438	37 500	181 945	218	527 993	324 206	852 199	933 656
		Total	145 252	120 792	67 531	333 575	657	1 105 584	616 596	1 722 180	1 886 982
	Both	Female	79 418	69 982	40 211	189 611	473	545 510	335 991	881 501	966 621
		Total	149 774	125 376	72 368	347 518	1 133	1 140 822	638 519	1 779 341	1 951 523
Free State	Independent	Female	714	721	436	1 871	2	3 993	3 327	7 320	7 924
		Total	1 349	1 340	836	3 525	6	8 199	6 406	14 605	15 881
	Public	Female	30 632	22 643	13 042	66 317	1	181 655	122 855	304 510	319 519
		Total	58 599	42 479	24 370	125 448	7	374 311	241 398	615 709	646 093
	Both	Female	31 346	23 364	13 478	68 188	3	185 648	126 182	311 830	327 443
		Total	28 602	20 455	11 728	60 785	10	196 862	121 622	318 484	334 531
Gauteng	Independent	Female	8 671	8 922	8 493	26 086	425	57 653	42 676	100 329	110 438
		Total	16 992	16 679	15 749	49 420	891	114 757	81 478	196 235	216 642
	Public	Female	89 230	67 394	45 585	202 209	1 288	531 966	352 887	884 853	930 324
		Total	176 138	124 682	82 560	383 380	3 911	1 078 304	687 811	1 766 115	1 858 745
	Both	Female	97 901	76 316	54 078	228 295	1 713	589 619	395 563	985 182	1 040 762
		Total	95 229	65 045	44 231	204 505	3 089	603 442	373 726	977 168	1 034 625
KwaZulu-Natal	Independent	Female	2 859	2 989	3 783	9 631	682	14 974	14 753	29 727	34 011
		Total	5 448	5 542	6 793	17 783	1 123	29 100	27 652	56 752	65 125
	Public	Female	131 185	118 026	71 177	320 388	134	744 756	547 845	1 292 601	1 388 778
		Total	259 326	219 641	132 191	611 158	333	1 542 714	1 076 278	2 618 992	2 812 844
	Both	Female	134 044	121 015	74 960	330 019	816	759 730	562 598	1 322 328	1 422 789
		Total	130 730	104 168	64 024	298 922	640	812 084	541 332	1 353 416	1 455 180
Limpopo	Independent	Female	2 064	2 129	2 124	6 317	9	13 013	11 000	24 013	26 164
		Total	3 881	3 964	3 794	11 639	24	26 057	20 511	46 568	50 765
	Public	Female	88 144	71 185	42 135	201 464	10	411 439	351 298	762 737	819 977
		Total	172 398	130 553	78 338	381 289	33	853 501	696 442	1 549 943	1 665 013
	Both	Female	90 208	73 314	44 259	207 781	19	424 452	362 298	786 750	846 141
		Total	86 071	61 203	37 873	185 147	38	455 106	354 655	809 761	869 637
Mpumalanga	Independent	Female	896	1 073	1 780	3 749	76	6 751	5 400	12 151	13 540
		Total	1 738	2 035	3 364	7 137	121	13 583	10 456	24 039	26 932
	Public	Female	47 088	40 584	25 757	113 429	349	277 072	200 222	477 294	507 481
		Total	91 283	75 627	47 407	214 317	822	578 125	389 047	967 172	1 027 851
	Both	Female	47 984	41 657	27 537	117 178	425	283 823	205 622	489 445	521 021
		Total	45 037	36 005	23 234	104 276	518	307 885	193 881	501 766	533 762
Northern Cape	Independent	Female	232	178	135	545	6	654	972	1 626	1 842
		Total	360	283	230	873	9	1 297	1 559	2 856	3 305
	Public	Female	11 123	8 507	5 064	24 694	0	81 025	46 974	127 999	135 841
		Total	21 379	15 752	9 244	46 375	0	167 234	91 285	258 519	274 189
	Both	Female	11 355	8 685	5 199	25 239	6	81 679	47 946	129 625	137 683
		Total	10 384	7 350	4 275	22 009	3	86 852	44 898	131 750	139 811
North West	Independent	Female	511	481	415	1 407	40	4 219	2 434	6 653	7 408
		Total	985	958	793	2 736	93	8 507	4 829	13 336	14 870
	Public	Female	34 175	25 457	14 479	74 111	51	220 033	134 213	354 246	375 999
		Total	67 409	47 160	27 440	142 009	149	453 078	263 470	716 548	760 272
	Both	Female	34 686	25 938	14 894	75 518	91	224 252	136 647	360 899	383 407
		Total	33 708	22 180	13 339	69 227	151	237 333	131 652	368 985	391 735
Western Cape	Independent	Female	1 660	1 651	1 653	4 964	118	11 719	8 413	20 132	23 369
		Total	3 322	3 279	3 308	9 909	310	23 365	16 656	40 021	46 334
	Public	Female	39 695	33 283	24 604	97 582	522	291 224	184 484	475 708	503 742
		Total	73 114	58 981	43 052	175 147	1 402	591 528	343 488	935 016	991 685
	Both	Female	41 355	34 934	26 257	102 546	640	302 943	192 897	495 840	527 111
		Total	35 081	27 326	20 103	82 510	1 072	311 950	167 247	479 197	510 908
South Africa	Independent	Female	20 018	20 688	21 530	62 236	1 613	130 493	100 760	231 253	257 661
		Total	38 597	38 664	39 704	116 965	3 053	260 103	191 470	451 573	504 395
	Public	Female	548 279	454 517	279 343	1 282 139	2 573	3 267 163	2 264 984	5 532 147	5 915 317
		Total	494 404	377 997	245 559	1 117 960	3 916	3 492 476	2 089 466	5 581 942	5 944 298
	Both	Female	568 297	475 205	300 873	1 344 375	4 186	3 397 656	2 365 744	5 763 400	6 172 978
		Total	535 198	399 126	250 964	1 185 288	6 181	3 606 826	2 231 541	5 838 367	6 255 091
Total			1 103 495	874 331	551 837	2 529 663	10 367	7 004 482	4 597 285	11 601 767	12 428 069

Note 1: Data exclude learners at stand-alone ECD sites and special schools.

Note 2: Owing to a shortage of space in the table, the male enrolment figures for ordinary public and independent schools are intentionally omitted in the provincial data, but are included in the national data.

1) Learners not grouped in any of the grades provided.

**Figure 1: Percentage distribution of learners in ordinary schools, by phase, in 2012**

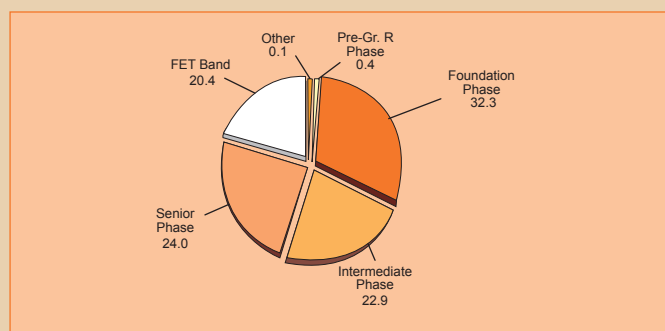


Figure 1 reveals that the highest proportion of learners in ordinary schools nationally was located in the foundation phase (32.3%) followed by the intermediate phase and the senior phase with 22.9% and 24.0% respectively.

**Figure 2: Percentage distribution of female learners in ordinary schools, by grade, in 2012**

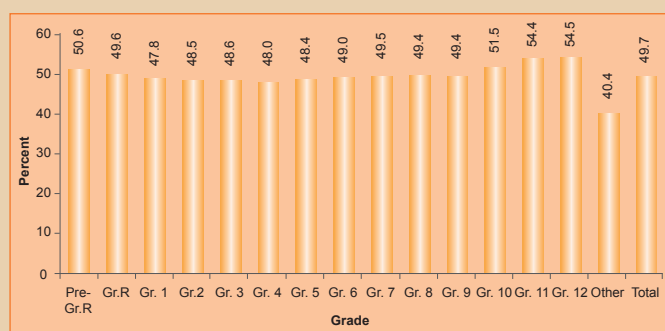


Figure 2 shows that, in the schooling system, there were more male than female (49.7%) learners. The lowest percentage of female learners in ordinary schools nationally was in Grades 1 (47.8%) and the highest percentage was in Grades 11 and 12 (54.4% and 54.5% respectively).

**Figure 3: Percentage distribution of learners in ordinary schools, by grade, in 2012**

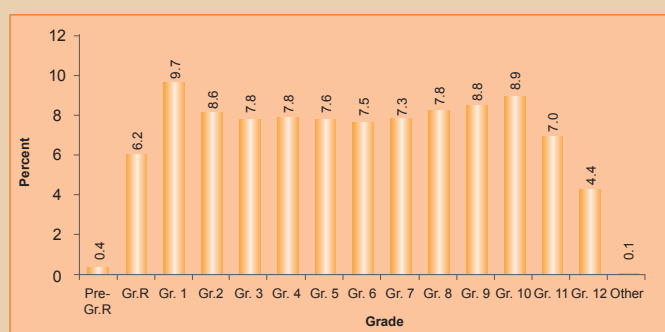


Figure 3 indicates that enrolment is generally very high in Grade 1 (9.7%) and declines as learners move to higher grades within the schooling system with 4.4% in Grade 12.

Table 5 reflects the following indicators:

(a) When counting all educators, the LER for ordinary public schools nationally was 30.4, while, when counting only state-paid educators in these schools, the LER increased to 32.3.

(b) The LSR for ordinary public schools nationally was 492, with three provinces (Gauteng, Mpumalanga and the Western Cape) higher than the national average.

**Table 5: Indicators for ordinary public schools, by province, in 2012**

Province	LER		LSR	ESR
	State-paid and SGB-paid Educators	State-paid Educators <sup>1)</sup>		
Eastern Cape	29.1	30.5	340	11.7
Free State	27.1	28.9	478	17.7
Gauteng	31.4	34.9	909	28.9
KwaZulu-Natal	31.2	32.6	472	15.2
Limpopo	30.1	30.5	423	14.0
Mpumalanga	31.1	32.0	569	18.3
Northern Cape	31.8	33.5	490	15.4
North West	30.6	32.3	478	15.6
Western Cape	30.6	36.5	683	22.3
<b>South Africa</b>	<b>30.4</b>	<b>32.3</b>	<b>492</b>	<b>16.2</b>

<sup>1)</sup> Underlying data not shown in publication.

(c) The ESR for ordinary public schools nationally was 16.2, with four provinces (the Free State, Gauteng, Mpumalanga and the Western Cape) higher than the national average.

**Figure 4: Frequency distribution of LER in ordinary PUBLIC schools in 2012**

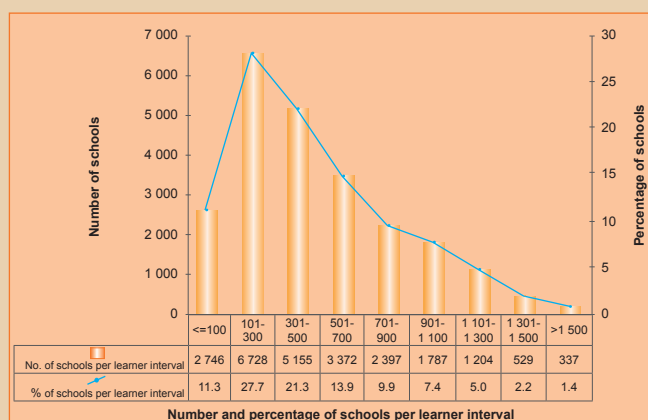


Figure 4, a histogram, shows that the highest number of ordinary public schools nationally (6 728, or 27.7%) was in the 101 to 300 learner interval. Furthermore, there were 2 746 schools (11.3%) and 337 schools (1.4%) in, respectively, the 100 and below learner interval and the above 1 500 learner interval.

**Figure 5: Frequency distribution of LER in ordinary public schools in 2012**

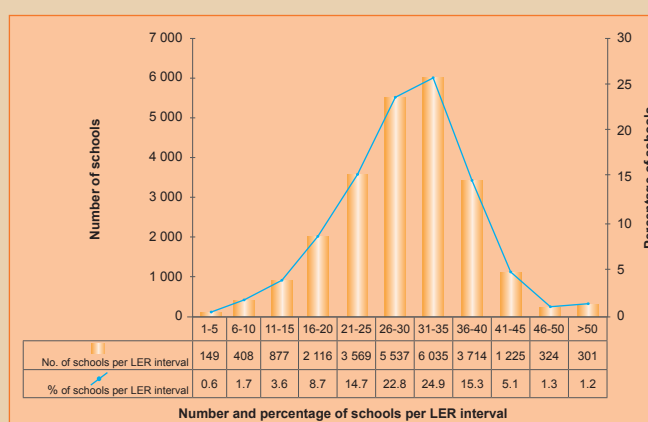


Figure 5, a histogram, reflects that the highest number of ordinary public schools nationally (6 035, or 24.9%) was in the 31 to 35 LER interval. Furthermore, there were 149 schools (0.6%) and 301 schools (1.2%) in, respectively, the one to five LER interval and the above 50 LER interval.