

2011 School Realities

Published September 2011
ISBN: 978-1-4315-0389-6
Enquiries: 012 357 3676

In 2011, there were 12 283 875 learners in ordinary public and independent schools (hereinafter collectively referred to as ordinary schools) in South Africa, who attended 25 851 schools and were served by 420 608 educators (see Tables 2 and 3). These data are from the survey conducted on the 10th school day. Approximately 99.7% of functional ordinary schools submitted the survey forms, and imputation was done to establish a data set of 100%. The figures in this publication are preliminary, and the final figures will be published in the more comprehensive *Education Statistics in South Africa 2011*.

Table 1: List of abbreviations

ECD Early Childhood Development	LSR Learner-School Ratio
ESR Educator-School Ratio	SGB School Governing Body
LER Learner-Educator Ratio	SNE Special Needs Education

Table 2: Number of learners, educators and schools in the ordinary school sector, by province, in 2011

Province	Public			Independent			Public and Independent					
	Learners	Educators	Schools	Learners	Educators	Schools	Learners	As % of National Total	Educators	As % of National Total	Schools	As % of National Total
Eastern Cape	1 910 265	65 861	5 589	53 313	2 638	166	1 963 578	16.0	68 499	16.3	5 755	22.3
Free State	641 219	23 203	1 371	16 791	854	66	658 010	5.4	24 057	5.7	1 437	5.6
Gauteng	1 810 197	57 836	2 040	207 734	13 696	519	2 017 931	16.4	71 532	17.0	2 559	9.9
KwaZulu-Natal	2 781 830	88 710	5 957	65 548	4 556	223	2 847 378	23.2	93 266	22.2	6 180	23.9
Limpopo	1 645 746	55 672	3 931	49 778	2 344	142	1 695 524	13.8	58 016	13.8	4 073	15.8
Mpumalanga	1 021 722	33 126	1 821	24 829	1 497	110	1 046 551	8.5	34 623	8.2	1 931	7.5
Northern Cape	271 474	8 664	591	3 271	235	20	274 745	2.2	8 899	2.1	611	2.4
North West	751 294	24 965	1 614	13 826	932	55	765 120	6.2	25 897	6.2	1 669	6.5
Western Cape	970 319	32 037	1 451	44 719	3 782	185	1 015 038	8.3	35 819	8.5	1 636	6.3
South Africa	11 804 066	390 074	24 365	479 809	30 534	1 486	12 283 875	100.0	420 608	100.0	25 851	100.0

Table 2 shows how many ordinary public and independent schools there were in 2011, and how many learners and educators there were in each. It further shows that the highest and lowest percentages of learners, educators and schools in the ordinary school sector occurred in KwaZulu-Natal and the Northern Cape, respectively.

Although the underlying data do not appear in Table 2, the national percentages of female educators in ordinary schools were as follows: public, 68.3%; independent, 71.7%; and both categories of schools combined, 68.5%.

Table 3: Number of learners, educators and schools in the ordinary school sector, by province, from 2009 to 2011

Province	Learners			Educators			Schools		
	2009	2010	2011	2009	2010	2011	2009	2010	2011
Eastern Cape	2 076 400	2 052 386	1 963 578	69 620	69 018	68 499	5 809	5 742	5 755
Free State	651 785	654 704	658 010	23 741	23 850	24 057	1 595	1 488	1 437
Gauteng	1 903 838	1 974 066	2 017 931	66 351	70 340	71 532	2 390	2 485	2 559
KwaZulu-Natal	2 827 335	2 806 988	2 847 378	89 377	91 926	93 266	6 091	6 147	6 180
Limpopo	1 707 280	1 706 401	1 695 524	58 563	58 194	58 016	4 105	4 106	4 073
Mpumalanga	1 035 637	1 036 432	1 046 551	35 221	34 575	34 623	1 934	1 939	1 931
Northern Cape	267 709	269 392	274 745	9 115	8 846	8 899	617	617	611
North West	777 285	759 114	765 120	26 697	26 006	25 897	1 768	1 701	1 669
Western Cape	980 694	1 000 616	1 015 038	34 382	35 354	35 819	1 597	1 625	1 636
South Africa	12 227 963	12 260 099	12 283 875	413 067	418 109	420 608	25 906	25 850	25 851

Sources:
2009: As published in *Education Statistics in South Africa 2009*.
2010: As published in *School Realities 2010*.

From the figures reflected in Table 3 it can be deduced that, from 2009 to 2011, the number of learners and educators nationally increased by 0.5% and 1.8%, respectively, while the number of schools decreased by 0.2%.



Table 4: Number of learners in ordinary schools, by province, sector, gender and grade, in 2011

Province	Sector	Gender	Pre-Grade R Phase	GET Band												Total (GET Band)	
				Foundation Phase					Intermediate Phase				Senior Phase				
				Pre-Gr. R	Gr. R	Gr. 1	Gr. 2	Gr. 3	Total	Gr. 4	Gr. 5	Gr. 6	Total	Gr. 7	Gr. 8		Gr. 9
Eastern Cape	Independent	Female	1 089	1 925	2 443	2 206	2 012	8 586	1 870	1 751	1 713	5 334	1 713	1 906	1 887	5 506	19 426
		Total	2 107	3 817	4 859	4 385	4 008	17 069	3 924	3 593	3 389	10 906	3 387	3 600	3 602	10 589	38 564
	Public	Female	5 806	75 929	93 806	79 780	74 457	323 972	74 734	73 301	73 127	221 162	73 928	73 102	70 991	218 021	763 155
		Total	11 291	153 367	196 507	166 081	155 679	671 634	158 803	153 596	150 774	463 173	148 916	145 061	139 611	433 588	1 568 395
	Both	Female	6 895	77 854	96 249	81 986	76 469	332 558	76 604	75 052	74 840	226 496	75 641	75 008	72 878	223 527	782 571
		Total	13 398	157 184	201 366	170 466	159 687	688 703	162 727	157 189	154 163	474 579	152 303	148 661	143 213	444 177	1 606 959
Free State	Independent	Female	213	350	758	689	621	2 418	598	592	629	1 819	590	781	774	2 145	6 382
		Total	451	732	1 598	1 430	1 264	5 024	1 313	1 176	1 201	3 690	1 185	1 459	1 582	4 226	12 940
	Public	Female	303	13 944	29 801	26 029	25 063	94 837	24 824	24 812	24 434	74 070	23 441	26 108	30 112	79 661	248 568
		Total	588	27 895	62 378	54 125	51 506	195 904	51 609	51 095	49 779	152 483	47 417	52 516	62 674	162 607	510 994
	Both	Female	516	14 294	30 559	26 718	25 684	97 255	25 422	25 404	25 063	75 889	24 031	26 889	30 886	81 806	254 950
		Total	1 039	28 627	63 976	55 555	52 770	200 928	52 922	52 271	50 980	156 173	48 602	53 975	64 256	166 833	523 934
Gauteng	Independent	Female	3 391	5 583	9 792	8 653	8 003	32 031	7 517	7 262	7 157	21 936	6 791	8 290	8 271	23 352	77 319
		Total	6 707	11 090	19 512	17 123	16 059	63 784	15 106	14 319	13 752	43 177	13 315	16 123	16 055	45 493	152 454
	Public	Female	2 434	37 192	85 553	76 827	74 008	273 580	71 635	71 108	69 999	212 742	71 372	74 138	77 154	222 664	708 986
		Total	4 957	75 150	176 573	156 751	149 265	557 739	145 119	142 786	140 714	428 619	141 619	148 352	156 277	446 248	1 432 606
	Both	Female	5 825	42 775	95 345	85 480	82 011	305 611	79 152	78 370	77 156	234 678	78 163	82 428	85 425	246 016	786 305
		Total	11 664	86 240	196 085	173 874	165 324	621 523	160 225	157 105	154 466	471 796	154 934	164 475	172 332	491 741	1 585 060
KwaZulu-Natal	Independent	Female	1 696	2 293	2 692	2 326	2 242	9 553	2 162	1 908	1 904	5 974	1 891	2 733	2 873	7 497	23 024
		Total	3 402	4 503	5 238	4 560	4 312	18 613	4 145	3 738	3 650	11 533	3 674	5 166	5 494	14 334	44 480
	Public	Female	4 086	88 040	127 471	103 927	100 168	419 606	101 601	102 389	102 834	306 824	104 158	114 481	118 793	337 432	1 063 862
		Total	7 874	177 082	268 735	215 785	209 018	870 620	212 347	211 125	209 824	633 296	211 178	235 425	237 771	684 374	2 188 290
	Both	Female	5 782	90 333	130 163	106 253	102 410	429 159	103 763	104 297	104 738	312 798	106 049	117 214	121 666	344 929	1 086 886
		Total	11 276	181 585	273 973	220 345	213 330	889 233	216 492	214 863	213 474	644 829	214 852	240 591	243 265	698 708	2 232 770
Limpopo	Independent	Female	896	1 829	2 015	1 797	1 841	7 482	1 642	1 667	1 641	4 950	1 612	2 402	2 109	6 123	18 555
		Total	1 763	3 567	4 119	3 615	3 592	14 893	3 369	3 284	3 315	9 968	3 255	4 586	3 958	11 799	36 660
	Public	Female	648	56 641	63 424	55 339	54 835	230 239	55 906	57 212	60 240	173 358	61 353	67 305	77 303	205 961	609 558
		Total	1 266	113 712	131 751	115 437	113 997	474 897	119 058	119 575	124 739	363 372	125 718	137 333	164 572	427 628	1 265 897
	Both	Female	1 544	58 470	65 439	57 136	56 676	237 721	57 548	58 879	61 881	178 308	62 965	69 707	79 412	212 084	628 113
		Total	3 029	117 279	135 870	119 052	117 589	489 790	122 427	122 859	128 054	373 340	128 973	141 919	168 535	439 427	1 302 557
Mpumalanga	Independent	Female	430	710	1 161	994	894	3 759	866	854	820	2 540	765	889	836	2 490	8 789
		Total	875	1 471	2 345	1 890	1 755	7 461	1 772	1 654	1 553	4 979	1 519	1 741	1 534	4 794	17 234
	Public	Female	1 351	27 521	45 692	38 238	36 943	148 394	38 458	39 258	38 871	116 587	39 745	44 392	41 277	125 414	390 395
		Total	2 748	55 255	96 311	80 164	76 998	308 728	81 230	80 971	79 751	241 952	80 151	89 779	82 785	252 715	803 395
	Both	Female	1 781	28 231	46 853	39 232	37 837	152 153	39 324	40 112	39 691	119 127	40 510	45 281	42 113	127 904	399 184
		Total	3 623	56 726	98 656	82 054	78 753	316 189	83 002	82 625	81 304	246 931	81 670	91 520	84 319	257 509	820 629
Northern Cape	Independent	Female	90	127	132	120	98	477	76	67	60	203	66	199	235	500	1 180
		Total	178	235	278	220	200	933	150	127	121	398	145	307	376	828	2 159
	Public	Female	393	6 407	12 908	11 535	11 112	41 962	11 637	11 614	10 993	34 244	10 741	11 385	10 647	32 773	108 979
		Total	764	12 918	26 807	23 938	22 802	86 465	24 429	23 833	22 399	70 661	21 654	22 871	21 462	65 987	223 113
	Both	Female	483	6 534	13 040	11 655	11 210	42 439	11 713	11 681	11 053	34 447	10 807	11 584	10 882	33 273	110 159
		Total	942	13 153	27 085	24 158	23 002	87 398	24 579	23 960	22 520	71 059	21 799	23 178	21 838	66 815	225 272
North West	Independent	Female	204	474	714	640	566	2 394	529	526	493	1 548	489	472	485	1 446	5 388
		Total	382	1 014	1 497	1 290	1 147	4 948	1 084	1 005	975	3 064	981	938	985	2 904	10 916
	Public	Female	447	20 992	35 901	32 789	30 418	120 100	31 182	30 283	28 994	90 459	27 802	29 143	31 074	88 019	298 578
		Total	883	41 923	75 240	67 754	63 014	247 931	64 844	62 180	58 632	185 656	56 267	58 935	62 777	177 979	611 566
	Both	Female	651	21 466	36 615	33 429	30 984	122 494	31 711	30 809	29 487	92 007	28 291	29 615	31 559	89 465	303 966
		Total	1 265	42 937	76 737	69 044	64 161	252 879	65 928	63 185	59 607	188 720	57 248	59 873	63 762	180 883	622 482
Western Cape	Independent	Female	1 381	1 604	1 991	1 746	1 569	6 910	1 552	1 502	1 477	4 531	1 450	1 758	1 663	4 871	16 312
		Total	2 612	3 171	3 837	3 500	3 151	13 659	3 148	3 002	2 984	9 134	2 836	3 336	3 285	9 457	32 250
	Public	Female	591	23 695	47 865	41 879	39 425	152 864	40 107	39 721	39 322	119 150	39 323	42 075	43 310	124 708	396 722
		Total	1 178	47 752	99 504	85 305	79 442	312 003	83 410	80 144	78 875	242 429	78 074	80 582	85 099	243 755	798 187
	Both	Female	1 972	25 299	49 856	43 625	40 994	159 774	41 659	41 223	40 799	123 681	40 773	43 833	44 973	129 579	413 034
		Total	3 790	50 923	103 341	88 805	82 593	325 662	86 558	83 146	81 859	251 563	80 910	83 918	88 384	253 212	830 437
South Africa	Independent	Female	9 390	14 895	21 698	19 171	17 846	73 610	16 812	16 129	15 894	48 835	15 367	19 430	19 133	53 930	176 375
		Male	9 087	14 705	21 585	18 842	17 642	72 774	17 199	15 769	15 046	48 014	14 930	17 826	17 738	50 494	171 282
		Total	18 477	29 600	43 283	38 013	35 488	146 384	34 011	31 898	30 940	96 849	30 297	37 256	36 871	104 424	347 657
	Public	Female	16 059	350 361	542 421	466 343	446 429	1 805 554	450 084	449 698	448 814	1 348 596	451 863	482 129	500 661	1 434 653	4 588 803
		Male	15 490	354 693	591 385	498 997	475 292	1 920 367	490 765	475 607	466 673	1 433 045	459 131	488 725	512 372	1 460 228	4 813 640
		Total	31 549	705 054	1 133 806	965 340	921 721	3 725 921	940 849	925 305	915 487	2 781 641	910 994	970 854	1 013 033	2 894 881	9 402 443
	Both	Female	25 449	365 256	564 119	485 514	464										

E M I S

Table 4: Number of learners in ordinary schools, by province, sector, gender and grade, in 2011 (concluded)

Province	Sector	Gender	FET Band				Other 1)	Total Primary (Gr. 1-7)	Total Secondary (Gr. 8-12)	Total (Gr. 1-12)	Grand Total	
			Gr. 10	Gr. 11	Gr. 12	Total						
Eastern Cape	Independent	Female	1 957	2 137	2 616	6 710	209	13 708	10 503	24 211	27 434	
		Total	3 740	3 890	4 624	12 254	388	27 545	19 456	47 001	53 313	
	Public	Female	77 551	66 134	37 108	180 793	306	543 133	324 886	868 019	950 060	
		Total	144 855	118 812	66 115	329 782	797	1 130 356	614 454	1 744 810	1 910 265	
	Both	Female	79 508	68 271	39 724	187 503	515	556 841	335 389	892 230	977 494	
		Male	69 087	54 431	31 015	154 533	670	601 060	298 521	899 581	986 084	
		Total	148 595	122 702	70 739	342 036	1 185	1 157 901	633 910	1 791 811	1 963 578	
	Free State	Independent	Female	738	572	451	1 761	0	4 477	3 316	7 793	8 356
			Total	1 386	1 118	896	3 400	0	9 167	6 441	15 608	16 791
Public		Female	30 508	23 126	13 838	67 472	8	178 404	123 692	302 096	316 351	
		Total	60 012	43 505	26 106	129 623	14	367 909	244 813	612 722	641 219	
Both		Female	31 246	23 698	14 289	69 233	8	182 881	127 008	309 889	324 707	
		Male	30 152	20 925	12 713	63 790	6	194 195	124 246	318 441	333 303	
		Total	61 398	44 623	27 002	133 023	14	377 076	251 254	628 330	658 010	
Gauteng		Independent	Female	8 894	8 225	8 019	25 138	476	55 175	41 699	96 874	106 324
			Total	17 028	15 645	15 101	47 774	799	109 186	79 952	189 138	207 734
	Public	Female	86 222	64 491	42 432	193 145	57	520 502	344 437	864 939	904 622	
		Total	172 430	121 313	78 765	372 508	126	1 052 827	677 137	1 729 964	1 810 197	
	Both	Female	95 116	72 716	50 451	218 283	533	575 677	386 136	961 813	1 010 946	
		Male	94 342	64 242	43 415	201 999	392	586 336	370 953	957 289	1 006 985	
		Total	189 458	136 958	93 866	420 282	925	1 162 013	757 089	1 919 102	2 017 931	
	KwaZulu-Natal	Independent	Female	3 117	2 509	3 576	9 202	322	15 125	14 808	29 933	34 244
			Total	5 793	4 744	6 529	17 066	600	29 317	27 726	57 043	65 548
Public		Female	128 454	107 248	67 290	302 992	535	742 548	536 266	1 278 814	1 371 475	
		Total	250 755	205 212	128 291	584 258	1 408	1 538 012	1 057 454	2 595 466	2 781 830	
Both		Female	131 571	109 757	70 866	312 194	857	757 673	551 074	1 308 747	1 405 719	
		Male	124 977	100 199	63 954	289 130	1 151	809 656	534 106	1 343 762	1 441 659	
		Total	256 548	209 956	134 820	601 324	2 008	1 567 329	1 085 180	2 652 509	2 847 378	
Limpopo		Independent	Female	2 114	1 842	2 011	5 967	30	12 215	10 478	22 693	25 448
			Total	4 044	3 566	3 650	11 260	95	24 549	19 804	44 353	49 778
	Public	Female	88 160	70 622	39 817	198 599	6	408 309	343 207	751 516	808 811	
		Total	173 722	130 683	74 156	378 561	22	850 275	680 471	1 530 746	1 645 746	
	Both	Female	90 274	72 464	41 828	204 566	36	420 524	353 685	774 209	834 259	
		Male	87 492	61 785	35 978	185 255	81	454 300	346 590	800 890	861 265	
		Total	177 766	134 249	77 806	389 821	117	874 824	700 275	1 575 099	1 695 524	
	Mpumalanga	Independent	Female	884	968	1 649	3 501	0	6 354	5 226	11 580	12 720
			Total	1 728	1 931	3 061	6 720	0	12 488	9 995	22 483	24 829
Public		Female	47 275	39 478	25 801	112 554	184	277 205	198 223	475 428	504 484	
		Total	92 677	73 991	48 385	215 053	526	575 576	387 617	963 193	1 021 722	
Both		Female	48 159	40 446	27 450	116 055	184	283 559	203 449	487 008	517 204	
		Male	46 246	35 476	23 996	105 718	342	304 505	194 163	498 668	529 347	
		Total	94 405	75 922	51 446	221 773	526	588 064	397 612	985 676	1 046 551	
Northern Cape		Independent	Female	220	171	161	552	29	619	986	1 605	1 851
			Total	354	275	257	886	48	1 241	1 569	2 810	3 271
	Public	Female	10 788	8 578	5 673	25 039	0	80 540	47 071	127 611	134 411	
		Total	21 162	16 097	10 338	47 597	0	165 862	91 930	257 792	271 474	
	Both	Female	11 008	8 749	5 834	25 591	29	81 159	48 057	129 216	136 262	
		Male	10 508	7 623	4 761	22 892	19	85 944	45 442	131 386	138 483	
		Total	21 516	16 372	10 595	48 483	48	167 103	93 499	260 602	274 745	
	North West	Independent	Female	499	408	366	1 273	28	3 957	2 230	6 187	6 893
			Total	993	825	641	2 459	69	7 979	4 382	12 361	13 826
Public		Female	34 688	24 232	13 393	72 313	386	217 369	132 530	349 899	371 724	
		Total	66 916	45 663	25 387	137 966	879	447 931	259 678	707 609	751 294	
Both		Female	35 187	24 640	13 759	73 586	414	221 326	134 760	356 086	378 617	
		Male	32 722	21 848	12 269	66 839	534	234 584	129 300	363 884	386 503	
		Total	67 909	46 488	26 028	140 425	948	455 910	264 060	719 970	765 120	
Western Cape		Independent	Female	1 681	1 563	1 599	4 843	96	11 287	8 264	19 551	22 632
			Total	3 333	3 117	3 146	9 596	261	22 458	16 217	38 675	44 719
	Public	Female	39 789	32 249	21 889	93 927	465	287 642	179 312	466 954	491 695	
		Total	73 261	57 351	39 050	169 662	1 292	584 754	335 343	920 097	970 319	
	Both	Female	41 470	33 812	23 488	98 770	551	298 929	187 576	486 505	514 327	
		Male	35 124	26 656	18 708	80 488	1 002	308 283	163 984	472 267	500 711	
		Total	76 594	60 468	42 196	179 258	1 553	607 212	351 560	958 772	1 015 038	
	South Africa	Independent	Female	20 104	18 395	20 448	58 947	1 190	122 917	97 510	220 427	245 902
			Male	18 295	16 716	17 457	52 468	1 070	121 013	88 032	209 045	233 907
Total			38 399	35 111	37 905	111 415	2 260	243 930	185 542	429 472	479 809	
Public		Female	543 435	436 158	267 241	1 246 834	1 937	3 255 652	2 229 624	5 485 276	5 853 633	
		Male	512 355	376 469	229 352	1 118 176	3 127	3 457 850	2 119 273	5 577 123	5 950 433	
		Total	1 055 790	812 627	496 593	2 365 010	5 064	6 713 502	4 348 897	11 062 399	11 804 066	
Both		Female	563 539	454 553	287 689	1 305 781	3 127	3 378 569	2 327 134	5 705 703	6 099 535	
		Male	530 650	393 185	246 809	1 170 644	4 197	3 578 863	2 207 305	5 786 168	6 184 340	
		Total	1 094 189	847 738	534 498	2 476 425	7 324	6 957 432	4 534 439	11 491 871	12 283 875	

Note 1: Data exclude learners at stand-alone ECD sites and special schools.

Note 2: Owing to a shortage of space in the table, the male enrolment figures for ordinary public and independent schools are intentionally omitted in the provincial data, but are included in the national data.

1) Learners not grouped in any of the grades provided – for example, SNE learners in separate classes (not those in mainstream classes) and post-matric learners.

Figure 1: Percentage distribution of learners in ordinary schools, by phase, in 2011

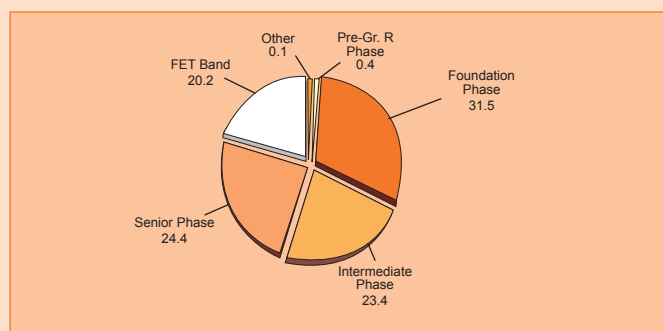


Figure 1 reveals that the highest proportion of learners in ordinary schools nationally was located in the foundation phase (31.5%).

Figure 2: Percentage distribution of female learners in ordinary schools, by grade, in 2011

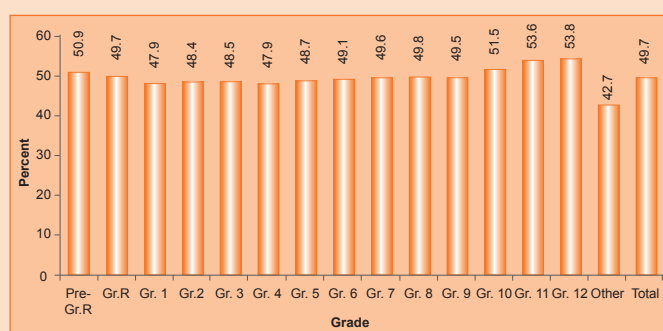
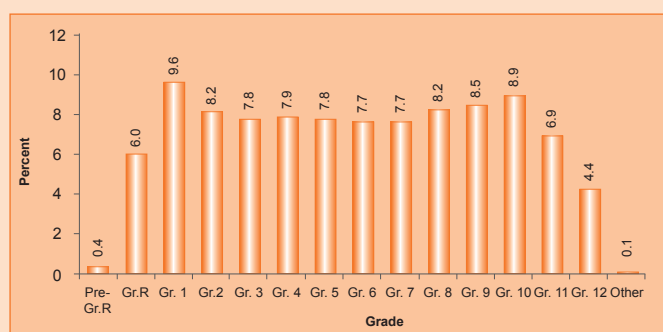


Figure 2 shows that, excluding “Other”, the lowest percentage of female learners in ordinary schools nationally was in Grades 1 and 4 (47.9% in each case) and the highest percentage was in Grade 12 (53.8%).

Figure 3: Percentage distribution of learners in ordinary schools, by grade, in 2011



As Figure 3 indicates, 9.6% of the learners in ordinary schools nationally were enrolled in Grade 1 and 4.4% were enrolled in Grade 12. This means that there were approximately two Grade 1 learners for every Grade 12 learner.

Table 5 reflects the following indicators:

(a) When counting all educators, the LER for ordinary public schools nationally was 30.3, while, when counting only state-paid educators in these schools, the LER increased to 32.2.

(b) The LSR for ordinary public schools nationally was 484.5, with three provinces (Gauteng, Mpumalanga and the Western Cape) higher than the national average.

Table 5: Indicators for ordinary PUBLIC schools, by province, in 2011

Province	LER		LSR	ESR
	State-paid and SGB-paid Educators	State-paid Educators ¹⁾		
Eastern Cape	29.0	30.4	341.8	11.8
Free State	27.6	29.4	467.7	16.9
Gauteng	31.3	34.8	887.4	28.4
KwaZulu-Natal	31.4	32.9	467.0	14.9
Limpopo	29.6	30.1	418.7	14.2
Mpumalanga	30.8	32.1	561.1	18.2
Northern Cape	31.3	33.4	459.3	14.7
North West	30.1	31.8	465.5	15.5
Western Cape	30.3	35.9	668.7	22.1
South Africa	30.3	32.2	484.5	16.0

1) Underlying data not shown in publication.

(c) The ESR for ordinary public schools nationally was 16.0, with four provinces (the Free State, Gauteng, Mpumalanga and the Western Cape) higher than the national average.

Figure 4: Frequency distribution of learners in ordinary PUBLIC schools in 2011

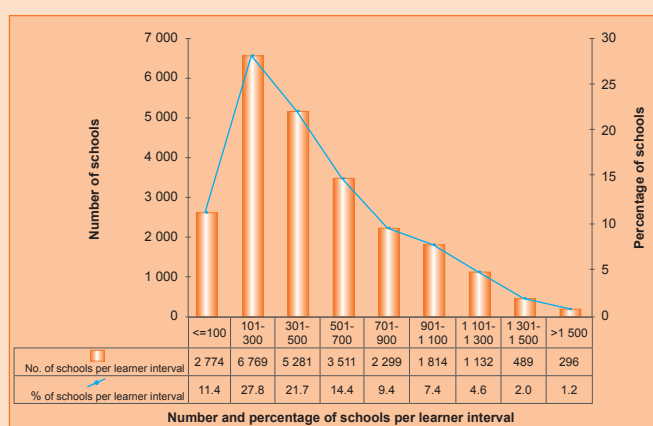


Figure 4, a histogram, shows that the highest number of ordinary public schools nationally (6 769, or 27.8%) was in the 101 to 300 learner interval. Furthermore, there were 2 774 schools (11.4%) and 296 schools (1.2%) in, respectively, the 100 and below learner interval and the above 1 500 learner interval.

Figure 5: Frequency distribution of LER in ordinary PUBLIC schools in 2011

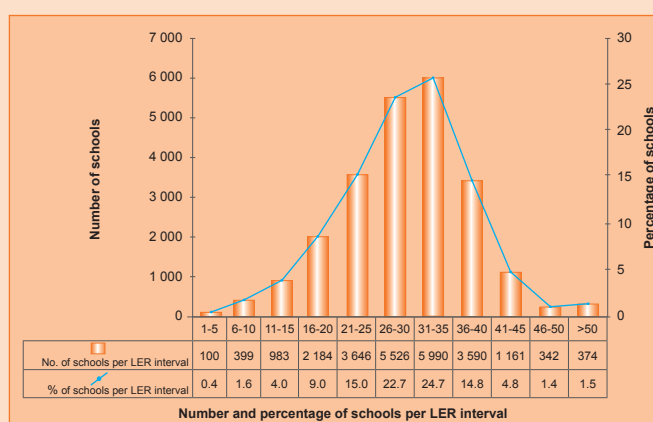


Figure 5, a histogram, reflects that the highest number of ordinary public schools nationally (5 990, or 24.7%) was in the 31 to 35 LER interval. Furthermore, there were 100 schools (0.4%) and 374 schools (1.5%) in, respectively, the one to five LER interval and the above 50 LER interval.