

# 2010 School Realities

Published August 2010  
ISBN: 978-1-4315-0191-5  
Enquiries: 012 357 3677

In 2010, there were 12 260 099 learners in ordinary public and independent schools (hereinafter collectively referred to as ordinary schools) in South Africa, who attended 25 850 schools and were served by 418 109 educators (see Tables 2 and 3). These data are from the survey conducted on the 10<sup>th</sup> school day. Approximately 99.8% of functional ordinary schools submitted the survey forms, and imputation was done to establish a data set of 100%. The figures in this publication are preliminary, and the final figures will be published in the more comprehensive *Education Statistics in South Africa 2010*.

**Table 1: List of abbreviations**

<b>ABET</b> Adult Basic Education and Training	<b>LER</b> Learner-Educator Ratio
<b>ECD</b> Early Childhood Development	<b>LSR</b> Learner-School Ratio
<b>ESR</b> Educator-School Ratio	<b>SGB</b> School Governing Body
<b>FET</b> Further Education and Training	<b>SNE</b> Special Needs Education

**Table 2: Number of learners, educators and schools in the ordinary school sector, by province, in 2010**

Province	Public			Independent			Public and Independent					
	Learners	Educators	Schools	Learners	Educators	Schools	Learners	As % of National Total	Educators	As % of National Total	Schools	As % of National Total
Eastern Cape	2 003 129	66 626	5 588	49 257	2 392	154	2 052 386	16.7	69 018	16.5	5 742	22.2
Free State	638 756	23 016	1 422	15 948	834	66	654 704	5.3	23 850	5.7	1 488	5.8
Gauteng	1 776 925	57 423	2 013	197 141	12 917	472	1 974 066	16.1	70 340	16.8	2 485	9.6
KwaZulu-Natal	2 743 979	87 466	5 927	63 009	4 460	220	2 806 988	22.9	91 926	22.0	6 147	23.8
Limpopo	1 660 700	55 992	3 965	45 701	2 202	141	1 706 401	13.9	58 194	13.9	4 106	15.9
Mpumalanga	1 013 760	33 245	1 838	22 672	1 330	101	1 036 432	8.5	34 575	8.3	1 939	7.5
Northern Cape	266 296	8 617	597	3 096	229	20	269 392	2.2	8 846	2.1	617	2.4
North West	746 096	25 074	1 646	13 018	932	55	759 114	6.2	26 006	6.2	1 701	6.6
Western Cape	959 714	31 870	1 455	40 902	3 484	170	1 000 616	8.2	35 354	8.5	1 625	6.3
South Africa	11 809 355	389 329	24 451	450 744	28 780	1 399	12 260 099	100.0	418 109	100.0	25 850	100.0

Table 2 shows how many ordinary public and independent schools there were in 2010, and how many learners and educators there were in each. It further shows that the highest and lowest percentages of learners, educators and schools in the ordinary school sector occurred in KwaZulu-Natal and the Northern Cape, respectively.

**Table 3: Number of learners, educators and schools in the ordinary school sector, by province, from 2008 to 2010**

Province	Learners			Educators			Schools		
	2008	2009	2010	2008	2009	2010	2008	2009	2010
Eastern Cape	2 079 994	2 076 400	2 052 386	66 536	69 620	69 018	5 825	5 808	5 742
Free State	670 588	656 754	654 704	23 383	24 364	23 850	1 675	1 611	1 488
Gauteng	1 894 027	1 903 838	1 974 066	64 307	66 351	70 340	2 405	2 390	2 485
KwaZulu-Natal	2 771 420	2 816 974	2 806 988	86 983	88 996	91 926	5 938	6 066	6 147
Limpopo	1 764 669	1 707 280	1 706 401	57 083	58 563	58 194	4 122	4 105	4 106
Mpumalanga	1 051 531	1 035 469	1 036 432	33 644	35 213	34 575	1 959	1 933	1 939
Northern Cape	265 866	267 709	269 392	9 019	9 115	8 846	617	617	617
North West	779 260	777 285	759 114	26 620	26 697	26 006	1 784	1 768	1 701
Western Cape	962 008	973 136	1 000 616	33 378	32 245	35 354	1 550	1 569	1 625
South Africa	12 239 363	12 214 845	12 260 099	400 953	411 164	418 109	25 875	25 867	25 850

Sources:

2008: As published in *Education Statistics in South Africa 2008*.

2009: As published in *School Realities 2009*.

Table 3 reflects an increase in both learner and educator numbers from 2008 to 2010, but a decrease in school numbers for the same period. Furthermore, from 2009 to 2010, the learners and educators increased by 0.4% and 1.7%, respectively, while the number of schools decreased by 0.1%.







**Figure 1: Percentage distribution of learners in ordinary schools, by phase, in 2010**

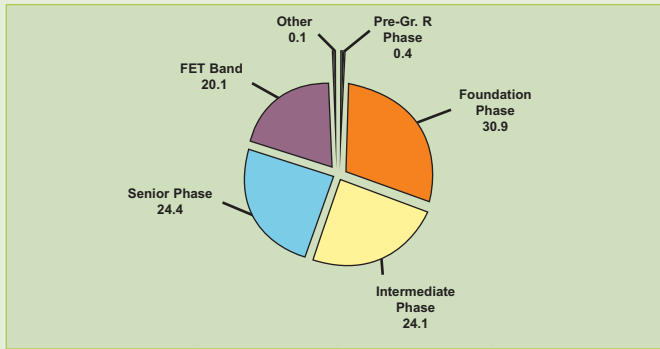


Figure 1 reveals that the highest proportion of learners in ordinary schools was located in the foundation phase (30.9%). As one moves up to higher levels within the schooling system, the proportion of learners decreases.

**Figure 2: Percentage distribution of female learners in ordinary schools, by grade, in 2010**

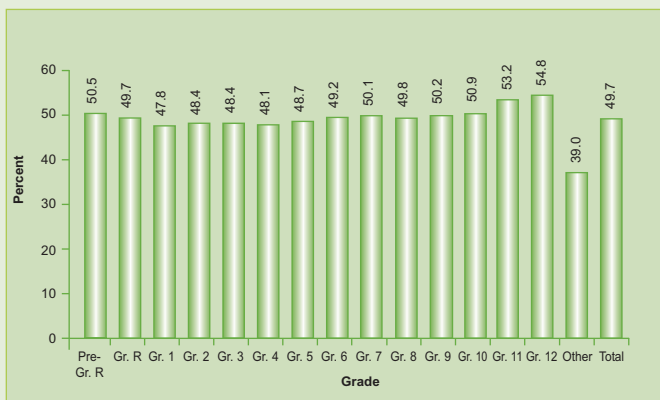
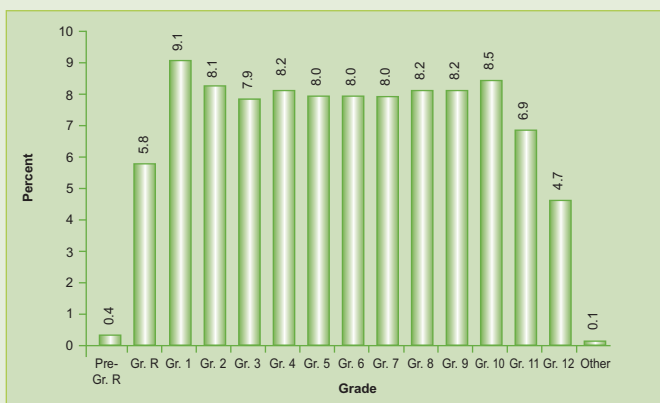


Figure 2 shows that the lowest percentage of female learners was in Grade 1 (47.8%) and the highest percentage was in Grade 12 (54.8%).

**Figure 3: Percentage distribution of learners in ordinary schools, by grade, in 2010**



As Figure 3 indicates, 9.1% of the learners were enrolled in Grade 1 and 4.7% were enrolled in Grade 12. This means that there were approximately two Grade 1 learners for every Grade 12 learner.

Table 5 reflects the following indicators:

(a) When counting all educators, the LER for ordinary public schools nationally was 30.3, while, when counting only state-paid educators in these schools, the LER increased to 32.2.

**Table 5: Indicators for ordinary public schools, by province, in 2010**

Province	LER		LSR	ESR
	State-Paid and SGB-Paid Educators	State-Paid Educators		
Eastern Cape	30.1	31.2	358	11.9
Free State	27.8	29.5	449	16.2
Gauteng	30.9	34.3	883	28.5
KwaZulu-Natal	31.4	32.9	463	14.8
Limpopo	29.7	30.1	419	14.1
Mpumalanga	30.5	31.7	552	18.1
Northern Cape	30.9	32.7	446	14.4
North West	29.8	31.4	453	15.2
Western Cape	30.1	35.7	660	21.9
South Africa	30.3	32.2	483	15.9

(b) The LSR for ordinary public schools nationally was 483, with three provinces (Gauteng, Mpumalanga and the Western Cape) higher than the national average.

(c) The ESR for ordinary public schools nationally was 15.9, with four provinces (the Free State, Gauteng, Mpumalanga and the Western Cape) higher than the national average.

**Figure 4: Frequency distribution of learners in ordinary public schools in 2010**

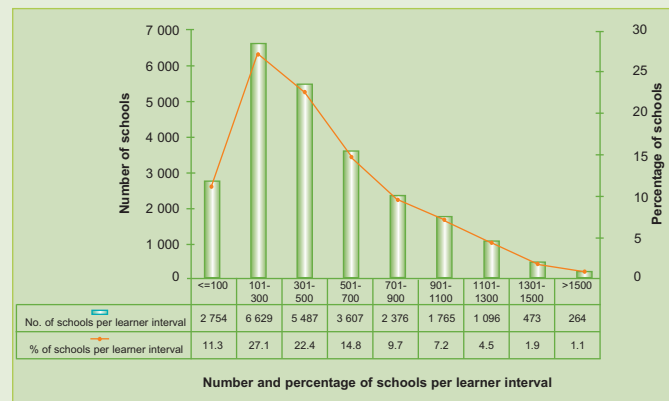


Figure 4, a histogram, shows that the highest number of ordinary public schools (6 629, or 27.1%) was in the 101 to 300 learner interval. Furthermore, there were 2 754 schools (11.3%) and 264 schools (1.1%) in, respectively, the 100 and below learner interval and the above 1 500 learner interval.

**Figure 5: Frequency distribution of LER in ordinary public schools in 2010**

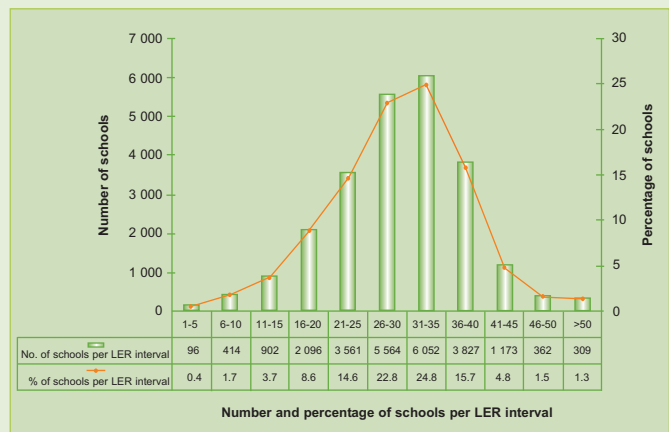


Figure 5, a histogram, reflects that the highest number of ordinary public schools (6 052, or 24.8%) was in the 31 to 35 LER interval. Furthermore, there were 96 schools (0.4%) and 309 schools (1.3%) in, respectively, the one to five LER interval and the above 50 LER interval.