

2009 School Realities

Published September 2009
ISBN: 978-1-77018-701-6
Enquiries: 012 312 5958

E
M
I
S

<http://www.education.gov.za>

In 2009, there were 12 214 845 learners in ordinary public and independent schools (hereinafter collectively referred to as ordinary schools) in South Africa, who attended 25 867 schools and were served by 411 164 educators (see Tables 2 and 3). These data are from the survey conducted on the 10th school day. Approximately 99% of functional ordinary schools submitted the survey forms (see Table 5 for provincial details). Except where otherwise indicated, all data are according to the new provincial demarcation boundaries. The figures in this publication are preliminary and the final figures will be published in the more comprehensive report, *Education Statistics in South Africa 2009*. No imputation was done on the data.

Table 1: List of abbreviations

ABET Adult Basic Education and Training	LER Learner-Educator Ratio
ECD Early Childhood Development	LSR Learner-School Ratio
ESR Educator-School Ratio	SGB School Governing Body
FET Further Education and Training	SNE Special Needs Education

Table 2: Number of learners, educators and schools in the ordinary school sector, by province, in 2009

Province	Public			Independent			Public and Independent					
	Learners	Educators	Schools	Learners	Educators	Schools	Learners	As % of National Total	Educators	As % of National Total	Schools	As % of National Total
Eastern Cape	2 032 198	67 409	5 668	44 202	2 211	140	2 076 400	17.0	69 620	16.9	5 808	22.5
Free State	642 234	23 583	1 547	14 520	781	64	656 754	5.4	24 364	5.9	1 611	6.2
Gauteng	1 720 243	54 586	1 970	183 595	11 765	420	1 903 838	15.6	66 351	16.1	2 390	9.2
KwaZulu-Natal	2 773 336	85 901	5 907	43 638	3 095	159	2 816 974	23.1	88 996	21.6	6 066	23.5
Limpopo	1 671 672	56 766	3 988	35 608	1 797	117	1 707 280	14.0	58 563	14.2	4 105	15.9
Mpumalanga	1 016 479	33 984	1 844	18 990	1 229	89	1 035 469	8.5	35 213	8.6	1 933	7.5
Northern Cape	264 857	8 888	600	2 852	227	17	267 709	2.2	9 115	2.2	617	2.4
North West	764 493	25 762	1 716	12 792	935	52	777 285	6.4	26 697	6.5	1 768	6.8
Western Cape	943 235	29 708	1 453	29 901	2 537	116	973 136	8.0	32 245	7.8	1 569	6.1
South Africa	11 828 747	386 587	24 693	386 098	24 577	1 174	12 214 845	100.0	411 164	100.0	25 867	100.0

Table 2 shows how many ordinary public and independent schools submitted data in 2009, and how many learners and educators there were in each. It further shows that the highest and lowest percentages of learners, educators and schools in the ordinary school sector occurred in KwaZulu-Natal and the Northern Cape, respectively.

Table 3: Number of learners, educators and schools in the ordinary school sector, by province, from 2007 to 2009

Province	Learners			Educators			Schools		
	2007	2008	2009	2007	2008	2009	2007	2008	2009
Eastern Cape	2 136 713	2 079 994	2 076 400	66 163	66 536	69 620	5 834	5 825	5 808
Free State	680 777	670 588	656 754	23 570	23 383	24 364	1 744	1 675	1 611
Gauteng	1 883 538	1 894 027	1 903 838	63 216	64 307	66 351	2 397	2 405	2 390
KwaZulu-Natal	2 848 652	2 771 420	2 816 974	88 042	86 983	88 996	6 057	5 938	6 066
Limpopo	1 816 230	1 764 669	1 707 280	54 769	57 083	58 563	4 140	4 122	4 105
Mpumalanga	1 054 085	1 051 531	1 035 469	32 276	33 644	35 213	1 973	1 959	1 933
Northern Cape	265 647	265 866	267 709	8 580	9 019	9 115	613	617	617
North West	747 248	779 260	777 285	25 701	26 620	26 697	1 780	1 784	1 768
Western Cape	968 327	962 008	973 136	31 908	33 378	32 245	1 527	1 550	1 569
South Africa	12 401 217	12 239 363	12 214 845	394 225	400 953	411 164	26 065	25 875	25 867

Sources:
2007: As published in the report *Education Statistics in South Africa 2007*.
2008: As published in the report *School Realities 2008*.

Table 3 reflects a decrease in both learner and school numbers from 2007 to 2009, but an increase in educator numbers for the same period.



education

Department:
Education
REPUBLIC OF SOUTH AFRICA

Table 5: Percentage return rate of survey forms in ordinary schools, by province, in 2009

Province	Public	Independent	Public and Independent
Eastern Cape	99.9	84.5	99.4
Free State	94.5	84.6	94.1
Gauteng	100.0	100.0	100.0
KwaZulu-Natal	99.4	70.3	98.3
Limpopo	99.1	100.0	99.2
Mpumalanga	100.0	100.0	100.0
Northern Cape	100.0	100.0	100.0
North West	99.2	96.3	99.2
Western Cape	100.0	79.1	97.7
South Africa	99.3	89.3	98.8

Table 5 shows that three provinces (Gauteng, Mpumalanga and the Northern Cape) had a 100% return rate of survey forms for both ordinary public and independent schools, while Limpopo and the Western Cape had a 100% return rate for ordinary independent schools and ordinary public schools, respectively.

Figure 1: Percentage distribution of female learners in ordinary schools, by grade, in 2009

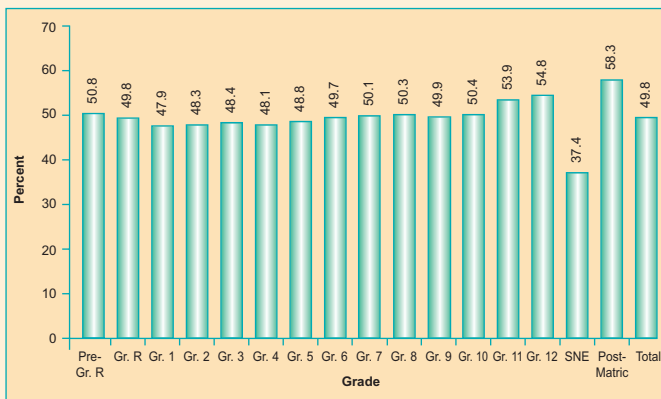
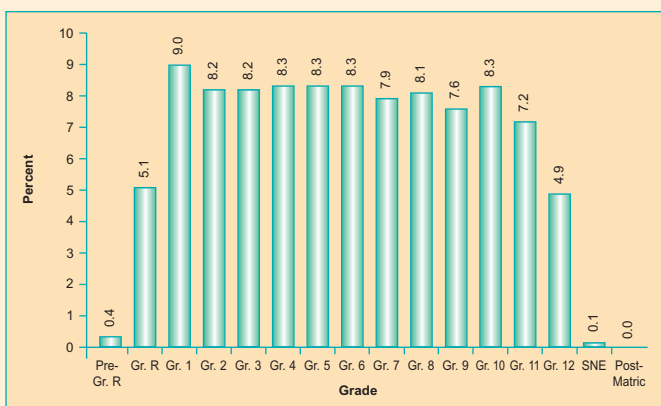


Figure 1 shows that the lowest percentage of female learners (47.9%) was in Grade 1 and the highest percentage (54.8%) was in Grade 12.

Figure 2: Percentage distribution of learners in ordinary schools, by grade, in 2009



As Figure 2 indicates, 9.0% of the learners were enrolled in Grade 1 and 4.9% were enrolled in Grade 12. This means that for every Grade 12 learner there were approximately two Grade 1 learners.

Table 6: Comparative data of learners in ordinary schools, by province, from 2003 to 2009

Province	Old Demarcation			New Demarcation			
	2003	2004	2005	2006	2007	2008	2009
Eastern Cape	2 116 426	2 150 308	2 206 575	2 100 425	2 136 713	2 079 994	2 076 400
Free State	696 155	690 490	689 189	685 971	680 777	670 588	656 754
Gauteng	1 661 817	1 697 908	1 745 262	1 863 375	1 883 538	1 894 027	1 903 838
KwaZulu-Natal	2 783 051	2 718 176	2 719 966	2 768 015	2 848 652	2 771 420	2 816 974
Limpopo	1 816 852	1 893 626	1 906 402	1 771 320	1 816 230	1 764 669	1 707 280
Mpumalanga	914 739	934 786	914 212	1 092 382	1 054 085	1 051 531	1 035 469
Northern Cape	202 010	209 000	210 152	261 736	265 647	265 866	267 709
North West	891 036	903 379	845 942	772 044	747 248	779 260	777 285
Western Cape	956 836	978 718	980 065	978 517	968 327	962 008	973 136
South Africa	12 038 922	12 176 391	12 217 765	12 293 785	12 401 217	12 239 363	12 214 845

Sources:

2003-2007: As published in the reports *Education Statistics in South Africa at a Glance* and *Education Statistics in South Africa*.

2008: As published in the report *School Realities 2008*.

Nationally, an upward trend in learner numbers is reflected for the period 2003 to 2007, followed by a downward trend towards 2009 (see Table 6 and Figure 3).

Figure 3: Trend line of national learners in ordinary schools from 2003 to 2009

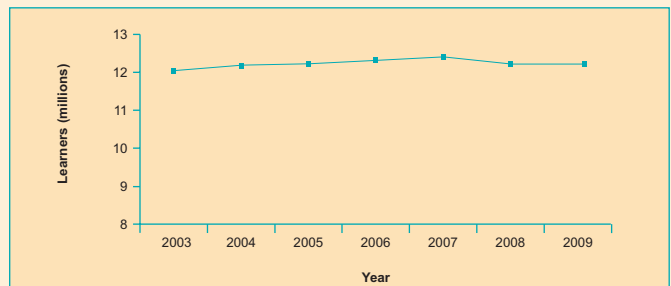


Table 7: Indicators for ordinary public schools, by province, in 2009

Province	LER		LSR	ESR
	State-Paid and SGB-Paid Educators	State-Paid Educators		
Eastern Cape	30.1	31.4	359	11.9
Free State	27.2	28.8	415	15.2
Gauteng	31.5	35.1	873	27.7
KwaZulu-Natal	32.3	34.2	469	14.5
Limpopo	29.4	30.1	419	14.2
Mpumalanga	29.9	31.3	551	18.4
Northern Cape	29.8	31.5	441	14.8
North West	29.7	31.5	446	15.0
Western Cape	31.8	37.7	649	20.4
South Africa	30.6	32.6	479	15.7

Table 7 reflects the following indicators:

(a) When counting all educators, the learner-educator ratio for ordinary public schools nationally was 30.6, while, when counting only state-paid educators in these schools, the learner-educator ratio increased to 32.6.

(b) The learner-school ratio for ordinary public schools nationally was 479, with three provinces (Gauteng, Mpumalanga and the Western Cape) higher than the national average.

(c) The educator-school ratio for ordinary public schools nationally was 15.7, with the same three provinces as in (b) (Gauteng, Mpumalanga and the Western Cape) higher than the national average.