

# 2008 School Realities

Published September 2008  
Enquiries: (012) 312-5958

EMIS

In 2008, there were 12 239 363 learners in ordinary public and independent schools (hereinafter collectively referred to as ordinary schools) in South Africa, who attended 25 875 schools and were served by 400 953 educators (see Tables 2 and 3). These data are from the survey conducted on the 10th school day. Approximately 97% of functional ordinary schools submitted the survey forms. *Except where otherwise indicated, all data are according to the new provincial demarcation boundaries.* The figures in this publication are preliminary and the final figures will be published in the more comprehensive report *Education Statistics in South Africa 2008*.

**Table 1: List of abbreviations**

<b>ABET</b>	Adult Basic Education and Training	<b>GPI</b>	Gender Parity Index
<b>ECD</b>	Early Childhood Development	<b>LER</b>	Learner-to-Educator Ratio
<b>FET</b>	Further Education and Training	<b>LSR</b>	Learner-to-School Ratio
<b>GER</b>	Gross Enrolment Ratio	<b>SGB</b>	School Governing Body
<b>GET</b>	General Education and Training	<b>SNE</b>	Special Needs Education

Table 2 shows how many ordinary public and independent schools there were in 2008, and how many learners and educators there were in each. It further shows that the highest and lowest percentage of ordinary school learners and educators in the country were based in KwaZulu-Natal and the Northern Cape, respectively.

**Table 2: Number of learners, educators and schools in the ordinary school sector, by province, in 2008**

Province	Ordinary Public Schools			Ordinary Independent Schools			Ordinary Public and Independent Schools					
	Learners	Educators	Schools	Learners	Educators	Schools	Learners	As % of National Total	Educators	As % of National Total	Schools	As % of National Total
Eastern Cape	2 037 777	64 371	5 686	42 217	2 165	139	2 079 994	17.0	66 536	16.6	5 825	22.5
Free State	656 074	22 696	1 614	14 514	687	61	670 588	5.5	23 383	5.8	1 675	6.5
Gauteng	1 716 196	53 017	1 989	177 831	11 290	416	1 894 027	15.5	64 307	16.0	2 405	9.3
KwaZulu-Natal	2 725 855	83 760	5 783	45 565	3 223	155	2 771 420	22.6	86 983	21.7	5 938	22.9
Limpopo	1 735 806	55 647	4 023	28 863	1 436	99	1 764 669	14.4	57 083	14.2	4 122	15.9
Mpumalanga	1 034 719	32 784	1 873	16 812	860	86	1 051 531	8.6	33 644	8.4	1 959	7.6
North West	765 762	25 736	1 730	13 498	884	54	779 260	6.4	26 620	6.6	1 784	6.9
Northern Cape	263 086	8 835	602	2 780	184	15	265 866	2.2	9 019	2.2	617	2.4
Western Cape	937 887	31 214	1 451	24 121	2 164	99	962 008	7.9	33 378	8.3	1 550	6.0
<b>National</b>	<b>11 873 162</b>	<b>378 060</b>	<b>24 751</b>	<b>366 201</b>	<b>22 893</b>	<b>1 124</b>	<b>12 239 363</b>	<b>100.0</b>	<b>400 953</b>	<b>100.0</b>	<b>25 875</b>	<b>100.0</b>

Table 3 reflects a decrease in learner numbers from 2007 to 2008, an increase in educator numbers from 2006 to 2008, and a decrease in the number of ordinary schools from 2006 to 2008.

**Table 3: Number of learners, educators and schools in the ordinary school sector, by province, from 2006 to 2008**

Province	Learners			Educators			Schools		
	2006	2007	2008	2006	2007	2008	2006	2007	2008
Eastern Cape	2 100 425	2 139 668	2 079 994	63 098	66 246	66 536	5 886	5 852	5 825
Free State	685 971	680 777	670 588	23 439	23 570	23 383	1 818	1 744	1 675
Gauteng	1 863 375	1 883 550	1 894 027	60 707	63 212	64 307	2 388	2 397	2 405
KwaZulu-Natal	2 768 015	2 848 878	2 771 420	85 220	88 023	86 983	5 954	6 060	5 938
Limpopo	1 771 320	1 782 954	1 764 669	53 652	54 797	57 083	4 102	4 080	4 122
Mpumalanga	1 092 382	1 087 774	1 051 531	31 998	33 189	33 644	2 079	2 033	1 959
North West	772 044	753 323	779 260	26 215	25 902	26 620	1 841	1 791	1 784
Northern Cape	261 736	264 512	265 866	8 706	8 522	9 019	622	613	617
Western Cape	978 517	969 065	962 008	32 825	31 991	33 378	1 579	1 529	1 550
<b>National</b>	<b>12 293 785</b>	<b>12 410 501</b>	<b>12 239 363</b>	<b>385 860</b>	<b>395 452</b>	<b>400 953</b>	<b>26 269</b>	<b>26 099</b>	<b>25 875</b>

Sources:

2006: As published in the report *Education Statistics in South Africa 2006*.

2007: As published in the report *School Realities 2007*.

<http://www.education.gov.za>



**education**

Department:  
Education  
**REPUBLIC OF SOUTH AFRICA**

# E M I S

**Table 4: Number of learners in ordinary schools, by province, school sector, gender and grade, in 2008**

Province	School Sector	Gender	Pre-Grade R Phase	GET Band													Total (GET Band)
				Foundation Phase					Intermediate Phase				Senior Phase				
				Pre-Gr. R	Gr. R	Gr. 1	Gr. 2	Gr. 3	Total	Gr. 4	Gr. 5	Gr. 6	Total	Gr. 7	Gr. 8	Gr. 9	
Eastern Cape	Independent	Female	897	1 240	1 636	1 537	1 600	6 013	1 660	1 641	1 570	4 871	1 472	1 401	1 357	4 230	15 114
		Total	1 706	2 445	3 446	3 250	3 217	12 358	3 368	3 302	3 061	9 731	2 906	2 760	2 626	8 292	30 381
	Public	Female	3 999	65 741	102 914	88 963	87 943	345 561	89 947	87 119	84 350	261 416	80 320	76 315	71 351	227 986	834 963
		Total	7 945	130 804	214 952	186 348	184 257	716 361	187 686	178 150	169 333	535 169	158 640	149 804	137 318	445 762	1 697 292
	Both	Female	4 896	66 981	104 550	90 500	89 543	351 574	91 607	88 760	85 920	266 287	81 792	77 716	72 708	232 216	850 077
		Total	4 755	66 268	113 848	99 098	97 931	377 145	99 447	92 692	86 474	278 613	79 754	74 848	67 236	221 838	877 596
Total			9 651	133 249	218 398	189 598	187 474	728 719	191 054	181 452	172 394	544 900	161 546	152 564	139 944	454 054	1 727 673
Free State	Independent	Female	211	234	605	531	492	1 862	543	639	540	1 722	520	604	564	1 688	5 272
		Total	414	493	1 230	1 057	1 011	3 791	1 092	1 222	1 111	3 425	1 042	1 148	1 185	3 375	10 591
	Public	Female	872	11 521	27 700	25 657	25 109	89 987	25 642	26 936	26 608	79 186	24 721	25 034	25 872	75 627	244 800
		Total	1 674	23 206	57 378	52 492	51 272	184 348	52 448	54 564	53 372	160 384	49 896	50 679	54 297	154 872	499 604
	Both	Female	1 083	11 755	28 305	26 188	25 601	91 849	26 185	27 575	27 148	80 908	25 241	25 638	26 436	77 315	250 072
		Total	1 005	11 944	30 303	27 361	26 682	96 290	27 355	28 211	27 335	82 901	25 697	26 189	29 046	80 932	260 123
Total			2 088	23 699	58 608	53 549	52 283	188 139	53 540	55 786	54 483	163 809	50 938	51 827	55 482	158 247	510 195
Gauteng	Independent	Female	2 302	4 142	7 660	7 259	6 971	26 032	6 513	6 377	6 251	19 141	6 184	7 221	6 796	20 201	65 374
		Total	4 588	8 366	15 620	14 353	13 589	51 928	12 853	12 689	12 430	37 972	11 950	14 061	13 342	39 353	129 253
	Public	Female	1 837	23 168	74 322	71 300	69 549	238 339	70 660	72 743	73 471	216 874	71 801	65 157	60 927	197 885	653 098
		Total	3 689	46 613	154 015	145 214	141 737	487 579	143 173	146 074	146 360	435 607	140 931	130 839	127 723	399 493	1 322 679
	Both	Female	4 139	27 310	81 982	78 559	76 520	264 371	77 173	79 120	79 722	236 015	77 985	72 378	67 723	218 086	718 472
		Total	4 138	27 669	87 653	81 008	78 806	275 136	78 853	79 643	79 068	237 564	74 896	72 522	73 342	220 760	733 460
Total			8 277	54 979	169 635	159 567	539 507	156 026	158 763	158 790	473 579	152 881	144 900	141 065	438 846	1 451 932	
KwaZulu-Natal	Independent	Female	944	1 409	1 935	1 758	1 606	6 708	1 515	1 511	1 604	4 630	1 699	1 702	1 398	4 799	16 137
		Total	1 856	2 911	3 929	3 524	3 257	13 621	3 164	3 048	3 258	9 470	3 384	3 483	2 980	9 847	32 938
	Public	Female	3 147	63 022	122 564	108 102	107 231	400 919	109 068	108 984	114 016	332 068	114 605	101 112	93 253	308 970	1 041 957
		Total	6 237	126 831	258 535	225 753	223 209	834 328	227 574	225 272	230 277	683 123	225 937	204 700	191 738	622 375	2 139 826
	Both	Female	4 091	64 431	124 499	109 860	108 837	407 627	110 583	110 495	115 620	336 698	116 304	102 814	94 651	313 769	1 058 094
		Total	4 002	65 311	137 965	124 499	117 629	440 322	120 155	117 825	117 915	355 895	113 017	105 369	100 067	318 453	1 114 670
Total			8 093	129 742	262 464	229 277	847 949	230 738	228 320	233 535	692 593	229 321	208 183	194 718	632 222	2 172 764	
Limpopo	Independent	Female	407	935	1 065	946	1 054	4 000	916	1 090	1 083	3 089	943	1 114	914	2 971	10 060
		Total	800	1 811	2 181	1 969	2 126	8 087	1 971	2 212	2 034	6 217	1 851	2 070	1 819	5 740	20 044
	Public	Female	1 387	48 406	61 294	62 003	64 499	236 202	69 088	71 256	65 037	205 381	63 036	66 512	65 118	194 666	636 249
		Total	2 779	97 152	127 851	128 591	134 386	487 980	145 441	145 752	133 028	424 221	128 290	135 309	134 681	398 280	1 310 481
	Both	Female	1 794	49 341	62 359	62 949	65 553	240 202	70 004	72 346	66 120	208 470	63 979	67 626	66 032	197 637	646 309
		Total	1 785	49 622	67 673	67 611	70 959	255 865	77 408	75 618	68 942	221 968	66 162	69 753	70 468	206 383	684 216
Total			3 579	98 963	130 032	130 560	496 067	147 412	147 964	135 062	430 438	130 141	137 379	136 500	404 020	1 330 525	
Mpumalanga	Independent	Female	345	597	851	741	745	2 934	742	706	636	2 084	567	433	405	1 405	6 423
		Total	691	1 162	1 787	1 492	1 448	5 889	1 457	1 384	1 247	4 088	1 136	866	801	2 803	12 780
	Public	Female	1 193	19 656	42 776	41 594	41 408	145 434	43 049	44 811	40 606	128 466	38 704	40 382	39 838	118 924	392 824
		Total	2 431	39 509	89 358	86 447	85 811	301 125	89 613	90 751	81 922	262 286	77 850	81 493	80 051	239 394	802 805
	Both	Female	1 538	20 253	43 627	42 335	42 153	148 368	43 791	45 517	41 242	130 550	39 271	40 815	40 243	120 329	399 247
		Total	1 584	20 418	47 518	45 604	45 106	158 646	47 279	46 618	41 927	135 824	39 715	41 544	40 609	121 868	416 338
Total			3 122	40 671	91 145	87 939	307 014	91 070	92 135	83 169	266 374	78 986	82 359	80 852	242 197	815 585	
North West	Independent	Female	291	361	766	661	612	2 400	563	531	528	1 622	568	456	393	1 417	5 439
		Total	533	769	1 491	1 289	1 222	4 771	1 128	1 057	1 002	3 187	1 040	932	736	2 708	10 666
	Public	Female	195	10 531	35 079	34 224	32 919	112 753	33 239	31 867	30 933	96 039	31 185	27 750	27 296	86 231	295 023
		Total	416	21 525	73 487	70 527	67 462	233 001	68 942	64 794	62 232	195 968	60 854	56 424	57 361	174 639	603 608
	Both	Female	486	10 892	35 845	34 885	33 531	115 153	33 802	32 398	31 461	97 661	31 753	28 206	27 689	87 648	300 462
		Total	463	11 402	39 133	36 931	35 153	122 619	36 268	33 453	31 773	101 494	30 141	29 150	30 408	89 699	313 812
Total			949	22 294	74 978	71 816	237 772	70 070	65 851	63 234	199 155	61 894	57 356	58 097	177 347	614 274	
Northern Cape	Independent	Female	34	74	110	88	85	357	77	65	64	206	92	215	176	483	1 046
		Total	67	156	230	193	177	756	157	123	130	410	183	358	274	815	1 981
	Public	Female	584	4 740	12 213	11 946	11 075	39 974	11 312	11 904	10 652	33 868	10 305	9 875	10 473	30 653	104 495
		Total	1 135	9 419	25 297	24 440	22 640	81 796	23 636	24 241	21 424	69 301	20 971	20 008	20 916	61 895	212 992
	Both	Female	618	4 814	12 323	12 034	11 160	40 331	11 389	11 969	10 716	34 074	10 397	10 090	10 649	31 136	105 541
		Total	584	4 761	13 204	12 599	11 657	42 221	12 404	12 395	10 838	35 637	10 757	10 276	10 541	31 574	109 432
Total			1 202	9 575	25 527	24 633	82 817	23 793	24 364	21 554	69 711	21 154	20 366	21 190	62 710	214 973	
Western Cape	Independent	Female	670	612	926	928	856	3 322	832	885	885	2 602	830	908	869	2 607	8 531
		Total	1 301	1 219	1 946	1 847	1 800	6 812	1 707	1 779	1 747	5 233	1 737	1 828	1 750	5 315	17 360
	Public	Female	727	14 724	42 961	40 525	39 027	137 237	41 270	43 428	39 050	123 748	38 479	35 456	35 803	109 738	370 723
		Total	1 363	29 408	89 381	83 035	79 035	280 859	85 450	86 598	77 884	249 932	75 747	69 841	73 058	218 646	749 437
	Both	Female	1 397	15 336	43 887	41 453	39 883	140 559	42 102	44 313	39 935	126 350	39 309	36 364	36 672	112 345	379 254
		Total	1 267														

# E M I S

Province	School Sector	Gender	FET Band				Other			Total Primary (Gr. 1–7)	Total Secondary (Gr. 8–12)	Total (Gr. 1–12)	Grand Total
			Gr. 10	Gr. 11	Gr. 12	Total	SNE 1)	Post-Matric	Total				
Eastern Cape	Independent	Female	1 621	1 718	1 774	5 113	16	440	456	11 116	7 871	18 987	21 580
		Total	3 059	3 166	3 194	9 419	51	660	711	22 550	14 805	37 355	42 217
	Public	Female	81 388	64 340	36 881	182 609	825	184	1 009	621 556	330 275	951 831	1 022 580
		Total	150 167	115 045	65 060	330 272	2 037	231	2 268	1 279 366	617 394	1 896 760	2 037 777
	Both	Female	83 009	66 058	38 655	187 722	841	624	1 465	632 672	338 146	970 818	1 044 160
		Male	70 217	52 153	29 599	151 969	1 247	267	1 514	669 244	294 053	963 297	1 035 834
Total		153 226	118 211	68 254	339 691	2 088	891	2 979	1 301 916	632 199	1 934 115	2 079 994	
Free State	Independent	Female	672	637	488	1 797	0	0	0	3 870	2 965	6 835	7 280
		Total	1 375	1 199	932	3 506	3	0	3	7 765	5 839	13 604	14 514
	Public	Female	33 763	26 089	16 265	76 117	3 108	0	3 108	182 373	127 023	309 396	324 897
		Total	67 320	49 111	30 648	147 079	7 717	0	7 717	371 422	252 055	623 477	656 074
	Both	Female	34 435	26 726	16 753	77 914	3 108	0	3 108	186 243	129 988	316 231	332 177
		Male	34 260	23 584	14 827	72 671	4 612	0	4 612	192 944	127 906	320 850	338 411
Total		68 695	50 310	31 580	150 585	7 720	0	7 720	379 187	257 894	637 081	670 588	
Gauteng	Independent	Female	7 689	8 170	6 998	22 857	57	38	95	47 215	36 874	84 089	90 628
		Total	14 996	15 634	13 155	43 785	152	53	205	93 484	71 188	164 672	177 831
	Public	Female	80 916	69 190	49 942	200 048	999	48	1 047	503 846	326 132	829 978	856 030
		Total	163 094	132 293	91 404	386 791	2 935	102	3 037	1 017 504	645 353	1 662 857	1 716 196
	Both	Female	88 605	77 360	56 940	222 905	1 056	86	1 142	551 061	363 006	914 067	946 658
		Male	89 485	70 567	47 619	207 671	2 031	69	2 100	559 927	353 535	913 462	947 367
Total		178 090	147 927	104 559	430 576	3 087	155	3 242	1 110 988	716 541	1 827 529	1 894 029	
KwaZulu-Natal	Independent	Female	1 820	1 801	2 018	5 639	14	36	50	11 628	8 739	20 367	22 770
		Total	3 516	3 429	3 696	10 641	69	61	130	23 564	17 104	40 668	45 565
	Public	Female	111 943	108 522	77 704	298 169	1 522	0	1 522	784 570	492 534	1 277 104	1 344 795
		Total	221 653	208 077	145 724	575 454	4 287	51	4 338	1 616 557	971 892	2 588 449	2 725 855
	Both	Female	113 763	110 323	79 722	303 808	1 536	36	1 572	796 198	501 273	1 297 471	1 367 565
		Male	111 406	101 183	69 698	282 287	2 820	76	2 896	843 923	487 723	1 331 646	1 403 855
Total		225 169	211 506	149 420	586 095	4 356	112	4 468	1 640 121	988 996	2 629 117	2 771 420	
Limpopo	Independent	Female	1 170	1 318	2 053	4 541	12	10	22	7 097	6 569	13 666	15 030
		Total	2 125	2 356	3 491	7 972	29	18	47	14 344	11 861	26 205	28 863
	Public	Female	92 543	83 111	47 939	223 593	42	46	88	456 213	355 223	811 436	861 317
		Total	181 975	151 029	89 295	422 299	106	141	247	943 339	692 289	1 635 628	1 735 806
	Both	Female	93 713	84 429	49 992	228 134	54	56	110	463 310	361 792	825 102	876 347
		Male	90 387	68 956	42 794	202 137	81	103	184	494 373	342 358	836 731	888 322
Total		184 100	153 385	92 786	430 271	135	159	294	957 683	704 150	1 661 833	1 764 669	
Mpumalanga	Independent	Female	395	459	897	1 751	1	0	1	4 988	2 589	7 577	8 520
		Total	786	957	1 596	3 339	2	0	2	9 951	5 006	14 957	16 812
	Public	Female	45 896	42 890	30 356	119 142	242	61	303	292 948	199 362	492 310	513 462
		Total	90 078	81 709	56 955	228 742	658	83	741	601 752	390 286	992 038	1 034 719
	Both	Female	46 291	43 349	31 253	120 893	243	61	304	297 936	201 951	499 887	521 982
		Male	44 573	39 317	27 298	111 188	417	22	439	313 767	193 341	507 108	529 549
Total		90 864	82 666	58 551	232 081	660	83	743	611 703	395 292	1 006 995	1 051 531	
North West	Independent	Female	403	435	352	1 190	0	8	8	4 229	2 039	6 268	6 928
		Total	742	853	689	2 284	3	12	15	8 229	3 952	12 181	13 498
	Public	Female	35 876	28 933	18 359	83 168	217	0	217	229 446	138 214	367 660	378 603
		Total	72 316	54 669	34 133	161 118	620	0	620	468 298	274 903	743 201	765 762
	Both	Female	36 279	29 368	18 711	84 358	217	8	225	233 675	140 253	373 928	385 531
		Male	36 779	26 154	16 111	79 044	406	4	410	242 852	138 602	381 454	393 729
Total		73 058	55 522	34 822	163 402	623	12	635	476 527	278 855	755 382	779 260	
Northern Cape	Independent	Female	167	142	131	440	6	0	6	581	831	1 412	1 526
		Total	268	232	224	724	8	0	8	1 193	1 356	2 549	2 780
	Public	Female	10 905	9 095	5 401	25 401	75	0	75	79 407	45 749	125 156	130 555
		Total	21 747	17 014	10 033	48 794	165	0	165	162 649	89 718	252 367	263 086
	Both	Female	11 072	9 237	5 532	25 841	81	0	81	79 988	46 580	126 568	132 081
		Male	10 943	8 009	4 725	23 677	92	0	92	83 854	44 494	128 348	133 785
Total		22 015	17 246	10 257	49 518	173	0	173	163 842	91 074	254 916	265 866	
Western Cape	Independent	Female	923	927	908	2 758	5	38	43	6 142	4 535	10 677	12 002
		Total	1 786	1 801	1 779	5 366	15	79	94	12 563	8 944	21 507	24 121
	Public	Female	43 026	36 100	24 914	104 040	78	0	78	284 740	175 299	460 039	475 568
		Total	79 524	64 178	43 208	186 910	177	0	177	577 130	329 809	906 939	937 887
	Both	Female	43 949	37 027	25 822	106 798	83	38	121	290 882	179 834	470 716	487 570
		Male	37 361	28 952	19 165	85 478	109	41	150	298 811	158 919	457 730	474 438
Total		81 310	65 979	44 987	192 276	192	79	271	589 693	338 753	928 446	962 008	
National	Independent	Female	14 860	15 607	15 619	46 086	111	570	681	96 866	73 012	169 878	186 264
		Male	13 793	14 020	13 137	40 950	221	313	534	96 777	67 043	163 820	179 937
	Total	28 653	29 627	28 756	87 036	332	883	1 215	193 643	140 055	333 698	366 201	
	Public	Female	536 256	468 270	307 761	1 312 287	7 108	339	7 447	3 435 099	2 189 811	5 624 910	5 907 807
		Total	511 618	404 855	258 699	1 175 172	11 594	269	11 863	3 602 918	2 073 888	5 676 806	5 965 355
	Both	Female	1 047 874	873 125	566 460	2 487 459	18 702	608	19 310	7 038 017	4 263 699	11 301 716	11 873 162
Male		551 116	483 877	323 380	1 358 373	7 219	909	8 128	3 531 965	2 262 823	5 794 788	6 094 071	
Total		525 411	418 875	271 836	1 216 122	11 815	582	12 397	3 699 695	2 140 931	5 840 626	6 145 292	
Total		1 076 527	902 752	595 216	2 574 495	19 034	1 491	20 525	7 231 660	4 403 754	11 635 414	12 239 363	

**Note 1:** Data exclude learners at stand-alone ECD sites, special schools, ABET centres and FET colleges.

**Note 2:** Owing to a shortage of space in the table, the male enrolment figures for ordinary public and independent schools are intentionally omitted in the provincial data, but are included in the national data.

1) SNE learners in separate classes.

**Figure 1: Percentage distribution of female learners in ordinary schools, by grade, in 2008**

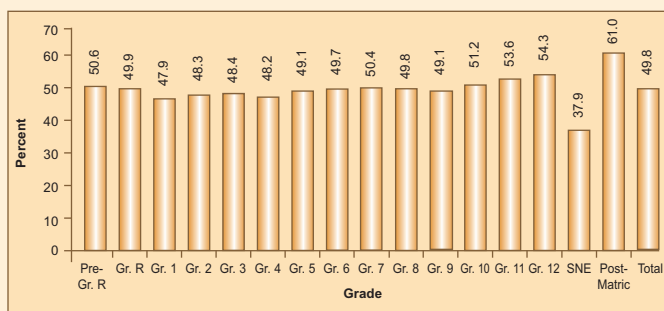


Figure 1 shows that the lowest percentage of female learners (47.9%) was in Grade 1 and the highest percentage (54.3%) was in Grade 12.

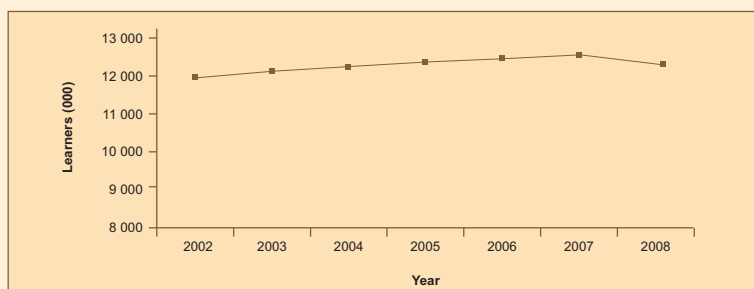
As Figure 2 indicates, 9.2% of the learners were enrolled in Grade 1 and 4.9% were enrolled in Grade 12. This means that for every Grade 12 learner there were approximately two Grade 1 learners.

**Table 5: Comparative data of learners in ordinary schools, by province, from 2002 to 2008**

Province	Learners						
	Old Demarcation				New Demarcation		
	2002	2003	2004	2005	2006	2007	2008
Eastern Cape	2 072 054	2 116 426	2 150 308	2 206 575	2 100 425	2 139 668	2 079 994
Free State	705 368	696 155	690 490	689 189	685 971	680 777	670 588
Gauteng	1 617 017	1 661 817	1 697 908	1 745 262	1 863 375	1 883 550	1 894 027
KwaZulu-Natal	2 729 834	2 783 051	2 718 176	2 719 966	2 768 015	2 848 878	2 771 420
Limpopo	1 839 079	1 816 852	1 893 626	1 906 402	1 771 320	1 782 954	1 764 669
Mpumalanga	914 353	914 739	934 786	914 212	1 092 382	1 087 774	1 051 531
North West	897 342	891 036	903 379	845 942	772 044	753 323	779 260
Northern Cape	196 731	202 010	209 000	210 152	261 736	264 512	265 866
Western Cape	945 239	956 836	978 718	980 065	978 517	969 065	962 008
National	11 917 017	12 038 922	12 176 391	12 217 765	12 293 785	12 410 501	12 239 363

Sources:  
2002-2006: As published in the reports *Education Statistics in South Africa at a Glance* and *Education Statistics in South Africa*.  
2007: As published in the report *School Realities 2007*.

**Figure 3: Trend line of learners in ordinary schools, from 2002 to 2008**

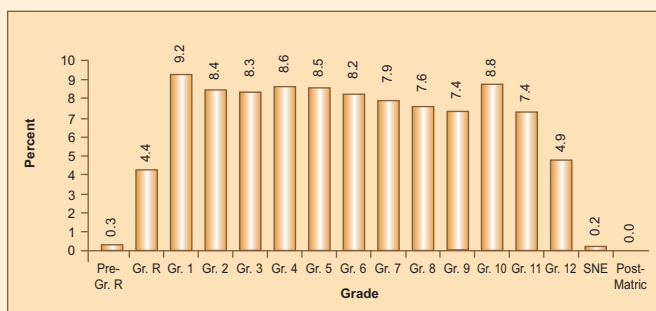


**Table 6: Indicators for ordinary schools, by province, in 2008**

Province	Ordinary Public Schools			Ordinary Public and Independent Schools					
	LER		LSR	GER (%)			GPI		
	State-Paid and SGB-Paid Educators	State-Paid Educators		Primary (Gr. 1-7)	Secondary (Gr. 8-12)	Total (Gr. 1-12)	Primary (Gr. 1-7)	Secondary (Gr. 8-12)	Total (Gr. 1-12)
Eastern Cape	31.7	33.5	358	119	75	100	1.00	1.23	1.08
Free State	28.9	30.4	406	90	85	88	0.97	1.02	0.99
Gauteng	32.4	36.4	863	87	88	87	1.01	1.03	1.01
KwaZulu-Natal	32.5	34.5	471	99	83	92	0.96	1.04	0.99
Limpopo	31.2	32.1	431	101	102	102	1.00	1.13	1.05
Mpumalanga	31.6	33.0	552	102	95	99	0.95	1.06	0.99
North West	29.8	31.4	443	94	81	89	0.92	0.96	0.93
Northern Cape	29.8	31.7	437	93	76	86	0.97	1.07	1.00
Western Cape	30.0	35.7	646	84	71	79	0.97	1.08	1.01
National	31.4	33.7	480	98	85	92	0.98	1.08	1.01

Source for population figures: Mid-year Population Estimates 2008, Statistical Release P0302, Statistics South Africa (31 July 2008).

**Figure 2: Percentage distribution of learners in ordinary schools, by grade, in 2008**



Nationally, an upward trend in learner numbers is reflected for the period 2002 to 2007, followed by a downward trend in 2008 (see Table 5 and Figure 3).

Table 6 reflects the following indicators:

(a) When counting all educators, the learner-to-educator ratio for ordinary public schools nationally was 31.4, while, when counting only state-paid educators in these schools, the learner-to-educator ratio increased to 33.7.

(b) The learner-to-school ratio for ordinary public schools nationally was 480, with three provinces (Gauteng, Mpumalanga and the Western Cape) higher than the national average.

(c) The gross enrolment ratio for all primary schools<sup>2)</sup> nationally was 98%, with four provinces (the Eastern Cape, KwaZulu-Natal, Limpopo and Mpumalanga) higher than the national average, while it was 85% for all secondary schools, with three provinces (Gauteng, Limpopo and Mpumalanga) higher than the national average.

(d) The gender parity index for all primary schools nationally was 0.98, with three provinces (the Eastern Cape, Gauteng and Limpopo) higher than the national average, while it was 1.08 for all secondary schools, with two provinces (the Eastern Cape and Limpopo) higher than the national average. Gender parity index values higher than 1.00 indicate that, in proportion to the appropriate school-age population, there were more females than males in the school system.

<sup>2)</sup> Calculated by using seven years as the appropriate age for Grade 1.