

# 2011 School Realities

Published September 2011  
ISBN: 978-1-4315-0389-6  
Enquiries: 012 357 3676

In 2011, there were 12 283 875 learners in ordinary public and independent schools (hereinafter collectively referred to as ordinary schools) in South Africa, who attended 25 851 schools and were served by 420 608 educators (see Tables 2 and 3). These data are from the survey conducted on the 10<sup>th</sup> school day. Approximately 99.7% of functional ordinary schools submitted the survey forms, and imputation was done to establish a data set of 100%. The figures in this publication are preliminary, and the final figures will be published in the more comprehensive *Education Statistics in South Africa 2011*.

**Table 1: List of abbreviations**

|  |                                    |
|--|------------------------------------|
| <b>ECD</b> Early Childhood Development | <b>LSR</b> Learner-School Ratio    |
| <b>ESR</b> Educator-School Ratio       | <b>SGB</b> School Governing Body   |
| <b>LER</b> Learner-Educator Ratio      | <b>SNE</b> Special Needs Education |

**Table 2: Number of learners, educators and schools in the ordinary school sector, by province, in 2011**

| Province            | Public            |                |               | Independent    |               |              | Public and Independent |                        |                |                        |               |                        |
|---------------------|-------------------|----------------|---------------|----------------|---------------|--------------|------------------------|------------------------|----------------|------------------------|---------------|------------------------|
|                     | Learners          | Educators      | Schools       | Learners       | Educators     | Schools      | Learners               | As % of National Total | Educators      | As % of National Total | Schools       | As % of National Total |
| Eastern Cape        | 1 910 265         | 65 861         | 5 589         | 53 313         | 2 638         | 166          | 1 963 578              | 16.0                   | 68 499         | 16.3                   | 5 755         | 22.3                   |
| Free State          | 641 219           | 23 203         | 1 371         | 16 791         | 854           | 66           | 658 010                | 5.4                    | 24 057         | 5.7                    | 1 437         | 5.6                    |
| Gauteng             | 1 810 197         | 57 836         | 2 040         | 207 734        | 13 696        | 519          | 2 017 931              | 16.4                   | 71 532         | 17.0                   | 2 559         | 9.9                    |
| KwaZulu-Natal       | 2 781 830         | 88 710         | 5 957         | 65 548         | 4 556         | 223          | 2 847 378              | 23.2                   | 93 266         | 22.2                   | 6 180         | 23.9                   |
| Limpopo             | 1 645 746         | 55 672         | 3 931         | 49 778         | 2 344         | 142          | 1 695 524              | 13.8                   | 58 016         | 13.8                   | 4 073         | 15.8                   |
| Mpumalanga          | 1 021 722         | 33 126         | 1 821         | 24 829         | 1 497         | 110          | 1 046 551              | 8.5                    | 34 623         | 8.2                    | 1 931         | 7.5                    |
| Northern Cape       | 271 474           | 8 664          | 591           | 3 271          | 235           | 20           | 274 745                | 2.2                    | 8 899          | 2.1                    | 611           | 2.4                    |
| North West          | 751 294           | 24 965         | 1 614         | 13 826         | 932           | 55           | 765 120                | 6.2                    | 25 897         | 6.2                    | 1 669         | 6.5                    |
| Western Cape        | 970 319           | 32 037         | 1 451         | 44 719         | 3 782         | 185          | 1 015 038              | 8.3                    | 35 819         | 8.5                    | 1 636         | 6.3                    |
| <b>South Africa</b> | <b>11 804 066</b> | <b>390 074</b> | <b>24 365</b> | <b>479 809</b> | <b>30 534</b> | <b>1 486</b> | <b>12 283 875</b>      | <b>100.0</b>           | <b>420 608</b> | <b>100.0</b>           | <b>25 851</b> | <b>100.0</b>           |

Table 2 shows how many ordinary public and independent schools there were in 2011, and how many learners and educators there were in each. It further shows that the highest and lowest percentages of learners, educators and schools in the ordinary school sector occurred in KwaZulu-Natal and the Northern Cape, respectively.

Although the underlying data do not appear in Table 2, the national percentages of female educators in ordinary schools were as follows: public, 68.3%; independent, 71.7%; and both categories of schools combined, 68.5%.

**Table 3: Number of learners, educators and schools in the ordinary school sector, by province, from 2009 to 2011**

| Province            | Learners          |                   |                   | Educators      |                |                | Schools       |               |               |
|---------------------|-------------------|-------------------|-------------------|----------------|----------------|----------------|---------------|---------------|---------------|
|                     | 2009              | 2010              | 2011              | 2009           | 2010           | 2011           | 2009          | 2010          | 2011          |
| Eastern Cape        | 2 076 400         | 2 052 386         | 1 963 578         | 69 620         | 69 018         | 68 499         | 5 809         | 5 742         | 5 755         |
| Free State          | 651 785           | 654 704           | 658 010           | 23 741         | 23 850         | 24 057         | 1 595         | 1 488         | 1 437         |
| Gauteng             | 1 903 838         | 1 974 066         | 2 017 931         | 66 351         | 70 340         | 71 532         | 2 390         | 2 485         | 2 559         |
| KwaZulu-Natal       | 2 827 335         | 2 806 988         | 2 847 378         | 89 377         | 91 926         | 93 266         | 6 091         | 6 147         | 6 180         |
| Limpopo             | 1 707 280         | 1 706 401         | 1 695 524         | 58 563         | 58 194         | 58 016         | 4 105         | 4 106         | 4 073         |
| Mpumalanga          | 1 035 637         | 1 036 432         | 1 046 551         | 35 221         | 34 575         | 34 623         | 1 934         | 1 939         | 1 931         |
| Northern Cape       | 267 709           | 269 392           | 274 745           | 9 115          | 8 846          | 8 899          | 617           | 617           | 611           |
| North West          | 777 285           | 759 114           | 765 120           | 26 697         | 26 006         | 25 897         | 1 768         | 1 701         | 1 669         |
| Western Cape        | 980 694           | 1 000 616         | 1 015 038         | 34 382         | 35 354         | 35 819         | 1 597         | 1 625         | 1 636         |
| <b>South Africa</b> | <b>12 227 963</b> | <b>12 260 099</b> | <b>12 283 875</b> | <b>413 067</b> | <b>418 109</b> | <b>420 608</b> | <b>25 906</b> | <b>25 850</b> | <b>25 851</b> |

Sources:  
2009: As published in *Education Statistics in South Africa 2009*.  
2010: As published in *School Realities 2010*.

From the figures reflected in Table 3 it can be deduced that, from 2009 to 2011, the number of learners and educators nationally increased by 0.5% and 1.8%, respectively, while the number of schools decreased by 0.2%.



**Table 4: Number of learners in ordinary schools, by province, sector, gender and grade, in 2011**

| Province      | Sector      | Gender | Pre-Grade R Phase | GET Band         |           |         |         |           |                    |         |         |           |              |         |           | Total (GET Band) |           |
|---------------|-------------|--------|-------------------|------------------|-----------|---------|---------|-----------|--------------------|---------|---------|-----------|--------------|---------|-----------|------------------|-----------|
|               |             |        |                   | Foundation Phase |           |         |         |           | Intermediate Phase |         |         |           | Senior Phase |         |           |                  |           |
|               |             |        |                   | Pre-Gr. R        | Gr. R     | Gr. 1   | Gr. 2   | Gr. 3     | Total              | Gr. 4   | Gr. 5   | Gr. 6     | Total        | Gr. 7   | Gr. 8     |                  | Gr. 9     |
| Eastern Cape  | Independent | Female | 1 089             | 1 925            | 2 443     | 2 206   | 2 012   | 8 586     | 1 870              | 1 751   | 1 713   | 5 334     | 1 713        | 1 906   | 1 887     | 5 506            | 19 426    |
|               |             | Total  | 2 107             | 3 817            | 4 859     | 4 385   | 4 008   | 17 069    | 3 924              | 3 593   | 3 389   | 10 906    | 3 387        | 3 600   | 3 602     | 10 589           | 38 564    |
|               | Public      | Female | 5 806             | 75 929           | 93 806    | 79 780  | 74 457  | 323 972   | 74 734             | 73 301  | 73 127  | 221 162   | 73 928       | 73 102  | 70 991    | 218 021          | 763 155   |
|               |             | Total  | 11 291            | 153 367          | 196 507   | 166 081 | 155 679 | 671 634   | 158 803            | 153 596 | 150 774 | 463 173   | 148 916      | 145 061 | 139 611   | 433 588          | 1 568 395 |
|               | Both        | Female | 6 895             | 77 854           | 96 249    | 81 986  | 76 469  | 332 558   | 76 604             | 75 052  | 74 840  | 226 496   | 75 641       | 75 008  | 72 878    | 223 527          | 782 571   |
|               |             | Total  | 13 398            | 157 184          | 201 366   | 170 466 | 159 687 | 688 703   | 162 727            | 157 189 | 154 163 | 474 579   | 152 303      | 148 661 | 143 213   | 444 177          | 1 606 959 |
| Free State    | Independent | Female | 213               | 350              | 758       | 689     | 621     | 2 418     | 598                | 592     | 629     | 1 819     | 590          | 781     | 774       | 2 145            | 6 382     |
|               |             | Total  | 451               | 732              | 1 598     | 1 430   | 1 264   | 5 024     | 1 313              | 1 176   | 1 201   | 3 690     | 1 185        | 1 459   | 1 582     | 4 226            | 12 940    |
|               | Public      | Female | 303               | 13 944           | 29 801    | 26 029  | 25 063  | 94 837    | 24 824             | 24 812  | 24 434  | 74 070    | 23 441       | 26 108  | 30 112    | 79 661           | 248 568   |
|               |             | Total  | 588               | 27 895           | 62 378    | 54 125  | 51 506  | 195 904   | 51 609             | 51 095  | 49 779  | 152 483   | 47 417       | 52 516  | 62 674    | 162 607          | 510 994   |
|               | Both        | Female | 516               | 14 294           | 30 559    | 26 718  | 25 684  | 97 255    | 25 422             | 25 404  | 25 063  | 75 889    | 24 031       | 26 889  | 30 886    | 81 806           | 254 950   |
|               |             | Total  | 1 039             | 28 627           | 63 976    | 55 555  | 52 770  | 200 928   | 52 922             | 52 271  | 50 980  | 156 173   | 48 602       | 53 975  | 64 256    | 166 833          | 523 934   |
| Gauteng       | Independent | Female | 3 391             | 5 583            | 9 792     | 8 653   | 8 003   | 32 031    | 7 517              | 7 262   | 7 157   | 21 936    | 6 791        | 8 290   | 8 271     | 23 352           | 77 319    |
|               |             | Total  | 6 707             | 11 090           | 19 512    | 17 123  | 16 059  | 63 784    | 15 106             | 14 319  | 13 752  | 43 177    | 13 315       | 16 123  | 16 055    | 45 493           | 152 454   |
|               | Public      | Female | 2 434             | 37 192           | 85 553    | 76 827  | 74 008  | 273 580   | 71 635             | 71 108  | 69 999  | 212 742   | 71 372       | 74 138  | 77 154    | 222 664          | 708 986   |
|               |             | Total  | 4 957             | 75 150           | 176 573   | 156 751 | 149 265 | 557 739   | 145 119            | 142 786 | 140 714 | 428 619   | 141 619      | 148 352 | 156 277   | 446 248          | 1 432 606 |
|               | Both        | Female | 5 825             | 42 775           | 95 345    | 85 480  | 82 011  | 305 611   | 79 152             | 78 370  | 77 156  | 234 678   | 78 163       | 82 428  | 85 425    | 246 016          | 786 305   |
|               |             | Total  | 11 664            | 86 240           | 196 085   | 173 874 | 165 324 | 621 523   | 160 225            | 157 105 | 154 466 | 471 796   | 154 934      | 164 475 | 172 332   | 491 741          | 1 585 060 |
| KwaZulu-Natal | Independent | Female | 1 696             | 2 293            | 2 692     | 2 326   | 2 242   | 9 553     | 2 162              | 1 908   | 1 904   | 5 974     | 1 891        | 2 733   | 2 873     | 7 497            | 23 024    |
|               |             | Total  | 3 402             | 4 503            | 5 238     | 4 560   | 4 312   | 18 613    | 4 145              | 3 738   | 3 650   | 11 533    | 3 674        | 5 166   | 5 494     | 14 334           | 44 480    |
|               | Public      | Female | 4 086             | 88 040           | 127 471   | 103 927 | 100 168 | 419 606   | 101 601            | 102 389 | 102 834 | 306 824   | 104 158      | 114 481 | 118 793   | 337 432          | 1 063 862 |
|               |             | Total  | 7 874             | 177 082          | 268 735   | 215 785 | 209 018 | 870 620   | 212 347            | 211 125 | 209 824 | 633 296   | 211 178      | 235 425 | 237 771   | 684 374          | 2 188 290 |
|               | Both        | Female | 5 782             | 90 333           | 130 163   | 106 253 | 102 410 | 429 159   | 103 763            | 104 297 | 104 738 | 312 798   | 106 049      | 117 214 | 121 666   | 344 929          | 1 086 886 |
|               |             | Total  | 11 276            | 181 585          | 273 973   | 220 345 | 213 330 | 889 233   | 216 492            | 214 863 | 213 474 | 644 829   | 214 852      | 240 591 | 243 265   | 698 708          | 2 232 770 |
| Limpopo       | Independent | Female | 896               | 1 829            | 2 015     | 1 797   | 1 841   | 7 482     | 1 642              | 1 667   | 1 641   | 4 950     | 1 612        | 2 402   | 2 109     | 6 123            | 18 555    |
|               |             | Total  | 1 763             | 3 567            | 4 119     | 3 615   | 3 592   | 14 893    | 3 369              | 3 284   | 3 315   | 9 968     | 3 255        | 4 586   | 3 958     | 11 799           | 36 660    |
|               | Public      | Female | 648               | 56 641           | 63 424    | 55 339  | 54 835  | 230 239   | 55 906             | 57 212  | 60 240  | 173 358   | 61 353       | 67 305  | 77 303    | 205 961          | 609 558   |
|               |             | Total  | 1 266             | 113 712          | 131 751   | 115 437 | 113 997 | 474 897   | 119 058            | 119 575 | 124 739 | 363 372   | 125 718      | 137 333 | 164 577   | 427 628          | 1 265 897 |
|               | Both        | Female | 1 544             | 58 470           | 65 439    | 57 136  | 56 676  | 237 721   | 57 548             | 58 879  | 61 881  | 178 308   | 62 965       | 69 707  | 79 412    | 212 084          | 628 113   |
|               |             | Total  | 3 029             | 117 279          | 135 870   | 119 052 | 117 589 | 489 790   | 122 427            | 122 859 | 128 054 | 373 340   | 128 973      | 141 919 | 168 535   | 439 427          | 1 302 557 |
| Mpumalanga    | Independent | Female | 430               | 710              | 1 161     | 994     | 894     | 3 759     | 866                | 854     | 820     | 2 540     | 765          | 889     | 836       | 2 490            | 8 789     |
|               |             | Total  | 875               | 1 471            | 2 345     | 1 890   | 1 755   | 7 461     | 1 772              | 1 654   | 1 553   | 4 979     | 1 519        | 1 741   | 1 534     | 4 794            | 17 234    |
|               | Public      | Female | 1 351             | 27 521           | 45 692    | 38 238  | 36 943  | 148 394   | 38 458             | 39 258  | 38 871  | 116 587   | 39 745       | 44 392  | 41 277    | 125 414          | 390 395   |
|               |             | Total  | 2 748             | 55 255           | 96 311    | 80 164  | 76 998  | 308 728   | 81 230             | 80 971  | 79 751  | 241 952   | 80 151       | 89 779  | 82 785    | 252 715          | 803 395   |
|               | Both        | Female | 1 781             | 28 231           | 46 853    | 39 232  | 37 837  | 152 153   | 39 324             | 40 112  | 39 691  | 119 127   | 40 510       | 45 281  | 42 113    | 127 904          | 399 184   |
|               |             | Total  | 3 623             | 56 726           | 98 656    | 82 054  | 78 753  | 316 189   | 83 002             | 82 625  | 81 304  | 246 931   | 81 670       | 91 520  | 84 319    | 257 509          | 820 629   |
| Northern Cape | Independent | Female | 90                | 127              | 132       | 120     | 98      | 477       | 76                 | 67      | 60      | 203       | 66           | 199     | 235       | 500              | 1 180     |
|               |             | Total  | 178               | 235              | 278       | 220     | 200     | 933       | 150                | 127     | 121     | 398       | 145          | 307     | 376       | 828              | 2 159     |
|               | Public      | Female | 393               | 6 407            | 12 908    | 11 535  | 11 112  | 41 962    | 11 637             | 11 614  | 10 993  | 34 244    | 10 741       | 11 385  | 10 647    | 32 773           | 108 979   |
|               |             | Total  | 764               | 12 918           | 26 807    | 23 938  | 22 802  | 86 465    | 24 429             | 23 833  | 22 399  | 70 661    | 21 654       | 22 871  | 21 462    | 65 987           | 223 113   |
|               | Both        | Female | 483               | 6 534            | 13 040    | 11 655  | 11 210  | 42 439    | 11 713             | 11 681  | 11 053  | 34 447    | 10 807       | 11 584  | 10 882    | 33 273           | 110 159   |
|               |             | Total  | 942               | 13 153           | 27 085    | 24 158  | 23 002  | 87 398    | 24 579             | 23 960  | 22 520  | 71 059    | 21 799       | 23 178  | 21 838    | 66 815           | 225 272   |
| North West    | Independent | Female | 204               | 474              | 714       | 640     | 566     | 2 394     | 529                | 526     | 493     | 1 548     | 489          | 472     | 485       | 1 446            | 5 388     |
|               |             | Total  | 382               | 1 014            | 1 497     | 1 290   | 1 147   | 4 948     | 1 084              | 1 005   | 975     | 3 064     | 981          | 938     | 985       | 2 904            | 10 916    |
|               | Public      | Female | 447               | 20 992           | 35 901    | 32 789  | 30 418  | 120 100   | 31 182             | 30 283  | 28 994  | 90 459    | 27 802       | 29 143  | 31 074    | 88 019           | 298 578   |
|               |             | Total  | 883               | 41 923           | 75 240    | 67 754  | 63 014  | 247 931   | 64 844             | 62 180  | 58 632  | 185 656   | 56 267       | 58 935  | 62 777    | 177 979          | 611 566   |
|               | Both        | Female | 651               | 21 466           | 36 615    | 33 429  | 30 984  | 122 494   | 31 711             | 30 809  | 29 487  | 92 007    | 28 291       | 29 615  | 31 559    | 89 465           | 303 966   |
|               |             | Total  | 1 265             | 42 937           | 76 737    | 69 044  | 64 161  | 252 879   | 65 928             | 63 185  | 59 607  | 188 720   | 57 248       | 59 873  | 63 762    | 180 883          | 622 482   |
| Western Cape  | Independent | Female | 1 381             | 1 604            | 1 991     | 1 746   | 1 569   | 6 910     | 1 552              | 1 502   | 1 477   | 4 531     | 1 450        | 1 758   | 1 663     | 4 871            | 16 312    |
|               |             | Total  | 2 612             | 3 171            | 3 837     | 3 500   | 3 151   | 13 659    | 3 148              | 3 002   | 2 984   | 9 134     | 2 836        | 3 336   | 3 285     | 9 457            | 32 250    |
|               | Public      | Female | 591               | 23 695           | 47 865    | 41 879  | 39 425  | 152 864   | 40 107             | 39 721  | 39 322  | 119 150   | 39 323       | 42 075  | 43 310    | 124 708          | 396 722   |
|               |             | Total  | 1 178             | 47 752           | 99 504    | 85 305  | 79 442  | 312 003   | 83 410             | 80 144  | 78 875  | 242 429   | 78 074       | 80 582  | 85 099    | 243 755          | 798 187   |
|               | Both        | Female | 1 972             | 25 299           | 49 856    | 43 625  | 40 994  | 159 774   | 41 659             | 41 223  | 40 799  | 123 681   | 40 773       | 43 833  | 44 973    | 129 579          | 413 034   |
|               |             | Total  | 3 790             | 50 923           | 103 341   | 88 805  | 82 593  | 325 662   | 86 558             | 83 146  | 81 859  | 251 563   | 80 910       | 83 918  | 88 384    | 253 212          | 830 437   |
| South Africa  | Independent | Female | 9 390             | 14 895           | 21 698    | 19 171  | 17 846  | 73 610    | 16 812             | 16 129  | 15 894  | 48 835    | 15 367       | 19 430  | 19 133    | 53 930           | 176 375   |
|               |             | Male   | 9 087             | 14 705           | 21 585    | 18 842  | 17 642  | 72 774    | 17 199             | 15 769  | 15 046  | 48 014    | 14 930       | 17 826  | 17 738    | 50 494           | 171 282   |
|               |             | Total  | 18 477            | 29 600           | 43 283    | 38 013  | 35 488  | 146 384   | 34 011             | 31 898  | 30 940  | 96 849    | 30 297       | 37 256  | 36 871    | 104 424          | 347 657   |
|               | Public      | Female | 16 059            | 350 361          | 542 421   | 466 343 | 446 429 | 1 805 554 | 450 084            | 449 698 | 448 814 | 1 348 596 | 451 863      | 482 129 | 500 661   | 1 434 653        | 4 588 803 |
|               |             | Male   | 15 490            | 354 693          | 591 385   | 498 997 | 475 292 | 1 920 367 | 490 765            | 475 607 | 466 673 | 1 433 045 | 459 131      | 488 725 | 512 372   | 1 460 228        | 4 813 640 |
|               |             | Total  | 31 549            | 705 054          | 1 133 806 | 965 340 | 921 721 | 3 725 921 | 940 849            | 925 305 | 915 487 | 2 781 641 | 910 994      | 970 854 | 1 013 033 | 2 894 881        | 9 402 443 |
|               | Both        | Female | 25 449            | 365 256          | 564 119   | 485 514 | 464     |           |                    |         |         |           |              |         |           |                  |           |

# E M I S

**Table 4: Number of learners in ordinary schools, by province, sector, gender and grade, in 2011 (concluded)**

| Province      | Sector        | Gender      | FET Band  |         |         |           | Other 1) | Total Primary<br>(Gr. 1-7) | Total Secondary<br>(Gr. 8-12) | Total<br>(Gr. 1-12) | Grand Total |         |
|---------------|---------------|-------------|-----------|---------|---------|-----------|----------|----------------------------|-------------------------------|---------------------|-------------|---------|
|               |               |             | Gr. 10    | Gr. 11  | Gr. 12  | Total     |          |                            |                               |                     |             |         |
| Eastern Cape  | Independent   | Female      | 1 957     | 2 137   | 2 616   | 6 710     | 209      | 13 708                     | 10 503                        | 24 211              | 27 434      |         |
|               |               | Total       | 3 740     | 3 890   | 4 624   | 12 254    | 388      | 27 545                     | 19 456                        | 47 001              | 53 313      |         |
|               | Public        | Female      | 77 551    | 66 134  | 37 108  | 180 793   | 306      | 543 133                    | 324 886                       | 868 019             | 950 060     |         |
|               |               | Total       | 144 855   | 118 812 | 66 115  | 329 782   | 797      | 1 130 356                  | 614 454                       | 1 744 810           | 1 910 265   |         |
|               | Both          | Female      | 79 508    | 68 271  | 39 724  | 187 503   | 515      | 556 841                    | 335 389                       | 892 230             | 977 494     |         |
|               |               | Male        | 69 087    | 54 431  | 31 015  | 154 533   | 670      | 601 060                    | 298 521                       | 899 581             | 986 084     |         |
|               |               | Total       | 148 595   | 122 702 | 70 739  | 342 036   | 1 185    | 1 157 901                  | 633 910                       | 1 791 811           | 1 963 578   |         |
|               | Free State    | Independent | Female    | 738     | 572     | 451       | 1 761    | 0                          | 4 477                         | 3 316               | 7 793       | 8 356   |
|               |               |             | Total     | 1 386   | 1 118   | 896       | 3 400    | 0                          | 9 167                         | 6 441               | 15 608      | 16 791  |
| Public        |               | Female      | 30 508    | 23 126  | 13 838  | 67 472    | 8        | 178 404                    | 123 692                       | 302 096             | 316 351     |         |
|               |               | Total       | 60 012    | 43 505  | 26 106  | 129 623   | 14       | 367 909                    | 244 813                       | 612 722             | 641 219     |         |
| Both          |               | Female      | 31 246    | 23 698  | 14 289  | 69 233    | 8        | 182 881                    | 127 008                       | 309 889             | 324 707     |         |
|               |               | Male        | 30 152    | 20 925  | 12 713  | 63 790    | 6        | 194 195                    | 124 246                       | 318 441             | 333 303     |         |
|               |               | Total       | 61 398    | 44 623  | 27 002  | 133 023   | 14       | 377 076                    | 251 254                       | 628 330             | 658 010     |         |
| Gauteng       |               | Independent | Female    | 8 894   | 8 225   | 8 019     | 25 138   | 476                        | 55 175                        | 41 699              | 96 874      | 106 324 |
|               |               |             | Total     | 17 028  | 15 645  | 15 101    | 47 774   | 799                        | 109 186                       | 79 952              | 189 138     | 207 734 |
|               | Public        | Female      | 86 222    | 64 491  | 42 432  | 193 145   | 57       | 520 502                    | 344 437                       | 864 939             | 904 622     |         |
|               |               | Total       | 172 430   | 121 313 | 78 765  | 372 508   | 126      | 1 052 827                  | 677 137                       | 1 729 964           | 1 810 197   |         |
|               | Both          | Female      | 95 116    | 72 716  | 50 451  | 218 283   | 533      | 575 677                    | 386 136                       | 961 813             | 1 010 946   |         |
|               |               | Male        | 94 342    | 64 242  | 43 415  | 201 999   | 392      | 586 336                    | 370 953                       | 957 289             | 1 006 985   |         |
|               |               | Total       | 189 458   | 136 958 | 93 866  | 420 282   | 925      | 1 162 013                  | 757 089                       | 1 919 102           | 2 017 931   |         |
|               | KwaZulu-Natal | Independent | Female    | 3 117   | 2 509   | 3 576     | 9 202    | 322                        | 15 125                        | 14 808              | 29 933      | 34 244  |
|               |               |             | Total     | 5 793   | 4 744   | 6 529     | 17 066   | 600                        | 29 317                        | 27 726              | 57 043      | 65 548  |
| Public        |               | Female      | 128 454   | 107 248 | 67 290  | 302 992   | 535      | 742 548                    | 536 266                       | 1 278 814           | 1 371 475   |         |
|               |               | Total       | 250 755   | 205 212 | 128 291 | 584 258   | 1 408    | 1 538 012                  | 1 057 454                     | 2 595 466           | 2 781 830   |         |
| Both          |               | Female      | 131 571   | 109 757 | 70 866  | 312 194   | 857      | 757 673                    | 551 074                       | 1 308 747           | 1 405 719   |         |
|               |               | Male        | 124 977   | 100 199 | 63 954  | 289 130   | 1 151    | 809 656                    | 534 106                       | 1 343 762           | 1 441 659   |         |
|               |               | Total       | 256 548   | 209 956 | 134 820 | 601 324   | 2 008    | 1 567 329                  | 1 085 180                     | 2 652 509           | 2 847 378   |         |
| Limpopo       |               | Independent | Female    | 2 114   | 1 842   | 2 011     | 5 967    | 30                         | 12 215                        | 10 478              | 22 693      | 25 448  |
|               |               |             | Total     | 4 044   | 3 566   | 3 650     | 11 260   | 95                         | 24 549                        | 19 804              | 44 353      | 49 778  |
|               | Public        | Female      | 88 160    | 70 622  | 39 817  | 198 599   | 6        | 408 309                    | 343 207                       | 751 516             | 808 811     |         |
|               |               | Total       | 173 722   | 130 683 | 74 156  | 378 561   | 22       | 850 275                    | 680 471                       | 1 530 746           | 1 645 746   |         |
|               | Both          | Female      | 90 274    | 72 464  | 41 828  | 204 566   | 36       | 420 524                    | 353 685                       | 774 209             | 834 259     |         |
|               |               | Male        | 87 492    | 61 785  | 35 978  | 185 255   | 81       | 454 300                    | 346 590                       | 800 890             | 861 265     |         |
|               |               | Total       | 177 766   | 134 249 | 77 806  | 389 821   | 117      | 874 824                    | 700 275                       | 1 575 099           | 1 695 524   |         |
|               | Mpumalanga    | Independent | Female    | 884     | 968     | 1 649     | 3 501    | 0                          | 6 354                         | 5 226               | 11 580      | 12 720  |
|               |               |             | Total     | 1 728   | 1 931   | 3 061     | 6 720    | 0                          | 12 488                        | 9 995               | 22 483      | 24 829  |
| Public        |               | Female      | 47 275    | 39 478  | 25 801  | 112 554   | 184      | 277 205                    | 198 223                       | 475 428             | 504 484     |         |
|               |               | Total       | 92 677    | 73 991  | 48 385  | 215 053   | 526      | 575 576                    | 387 617                       | 963 193             | 1 021 722   |         |
| Both          |               | Female      | 48 159    | 40 446  | 27 450  | 116 055   | 184      | 283 559                    | 203 449                       | 487 008             | 517 204     |         |
|               |               | Male        | 46 246    | 35 476  | 23 996  | 105 718   | 342      | 304 505                    | 194 163                       | 498 668             | 529 347     |         |
|               |               | Total       | 94 405    | 75 922  | 51 446  | 221 773   | 526      | 588 064                    | 397 612                       | 985 676             | 1 046 551   |         |
| Northern Cape |               | Independent | Female    | 220     | 171     | 161       | 552      | 29                         | 619                           | 986                 | 1 605       | 1 851   |
|               |               |             | Total     | 354     | 275     | 257       | 886      | 48                         | 1 241                         | 1 569               | 2 810       | 3 271   |
|               | Public        | Female      | 10 788    | 8 578   | 5 673   | 25 039    | 0        | 80 540                     | 47 071                        | 127 611             | 134 411     |         |
|               |               | Total       | 21 162    | 16 097  | 10 338  | 47 597    | 0        | 165 862                    | 91 930                        | 257 792             | 271 474     |         |
|               | Both          | Female      | 11 008    | 8 749   | 5 834   | 25 591    | 29       | 81 159                     | 48 057                        | 129 216             | 136 262     |         |
|               |               | Male        | 10 508    | 7 623   | 4 761   | 22 892    | 19       | 85 944                     | 45 442                        | 131 386             | 138 483     |         |
|               |               | Total       | 21 516    | 16 372  | 10 595  | 48 483    | 48       | 167 103                    | 93 499                        | 260 602             | 274 745     |         |
|               | North West    | Independent | Female    | 499     | 408     | 366       | 1 273    | 28                         | 3 957                         | 2 230               | 6 187       | 6 893   |
|               |               |             | Total     | 993     | 825     | 641       | 2 459    | 69                         | 7 979                         | 4 382               | 12 361      | 13 826  |
| Public        |               | Female      | 34 688    | 24 232  | 13 393  | 72 313    | 386      | 217 369                    | 132 530                       | 349 899             | 371 724     |         |
|               |               | Total       | 66 916    | 45 663  | 25 387  | 137 966   | 879      | 447 931                    | 259 678                       | 707 609             | 751 294     |         |
| Both          |               | Female      | 35 187    | 24 640  | 13 759  | 73 586    | 414      | 221 326                    | 134 760                       | 356 086             | 378 617     |         |
|               |               | Male        | 32 722    | 21 848  | 12 269  | 66 839    | 534      | 234 584                    | 129 300                       | 363 884             | 386 503     |         |
|               |               | Total       | 67 909    | 46 488  | 26 028  | 140 425   | 948      | 455 910                    | 264 060                       | 719 970             | 765 120     |         |
| Western Cape  |               | Independent | Female    | 1 681   | 1 563   | 1 599     | 4 843    | 96                         | 11 287                        | 8 264               | 19 551      | 22 632  |
|               |               |             | Total     | 3 333   | 3 117   | 3 146     | 9 596    | 261                        | 22 458                        | 16 217              | 38 675      | 44 719  |
|               | Public        | Female      | 39 789    | 32 249  | 21 889  | 93 927    | 465      | 287 642                    | 179 312                       | 466 954             | 491 695     |         |
|               |               | Total       | 73 261    | 57 351  | 39 050  | 169 662   | 1 292    | 584 754                    | 335 343                       | 920 097             | 970 319     |         |
|               | Both          | Female      | 41 470    | 33 812  | 23 488  | 98 770    | 551      | 298 929                    | 187 576                       | 486 505             | 514 327     |         |
|               |               | Male        | 35 124    | 26 656  | 18 708  | 80 488    | 1 002    | 308 283                    | 163 984                       | 472 267             | 500 711     |         |
|               |               | Total       | 76 594    | 60 468  | 42 196  | 179 258   | 1 553    | 607 212                    | 351 560                       | 958 772             | 1 015 038   |         |
|               | South Africa  | Independent | Female    | 20 104  | 18 395  | 20 448    | 58 947   | 1 190                      | 122 917                       | 97 510              | 220 427     | 245 902 |
|               |               |             | Male      | 18 295  | 16 716  | 17 457    | 52 468   | 1 070                      | 121 013                       | 88 032              | 209 045     | 233 907 |
| Total         |               |             | 38 399    | 35 111  | 37 905  | 111 415   | 2 260    | 243 930                    | 185 542                       | 429 472             | 479 809     |         |
| Public        |               | Female      | 543 435   | 436 158 | 267 241 | 1 246 834 | 1 937    | 3 255 652                  | 2 229 624                     | 5 485 276           | 5 853 633   |         |
|               |               | Male        | 512 355   | 376 469 | 229 352 | 1 118 176 | 3 127    | 3 457 850                  | 2 119 273                     | 5 577 123           | 5 950 433   |         |
|               |               | Total       | 1 055 790 | 812 627 | 496 593 | 2 365 010 | 5 064    | 6 713 502                  | 4 348 897                     | 11 062 399          | 11 804 066  |         |
| Both          |               | Female      | 563 539   | 454 553 | 287 689 | 1 305 781 | 3 127    | 3 378 569                  | 2 327 134                     | 5 705 703           | 6 099 535   |         |
|               |               | Male        | 530 650   | 393 185 | 246 809 | 1 170 644 | 4 197    | 3 578 863                  | 2 207 305                     | 5 786 168           | 6 184 340   |         |
|               |               | Total       | 1 094 189 | 847 738 | 534 498 | 2 476 425 | 7 324    | 6 957 432                  | 4 534 439                     | 11 491 871          | 12 283 875  |         |

Note 1: Data exclude learners at stand-alone ECD sites and special schools.

Note 2: Owing to a shortage of space in the table, the male enrolment figures for ordinary public and independent schools are intentionally omitted in the provincial data, but are included in the national data.

1) Learners not grouped in any of the grades provided – for example, SNE learners in separate classes (not those in mainstream classes) and post-matric learners.

**Figure 1: Percentage distribution of learners in ordinary schools, by phase, in 2011**

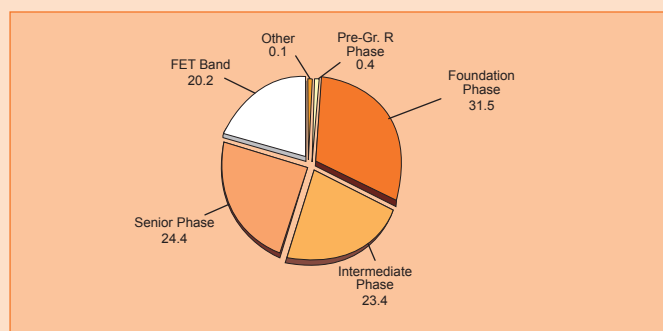


Figure 1 reveals that the highest proportion of learners in ordinary schools nationally was located in the foundation phase (31.5%).

**Figure 2: Percentage distribution of female learners in ordinary schools, by grade, in 2011**

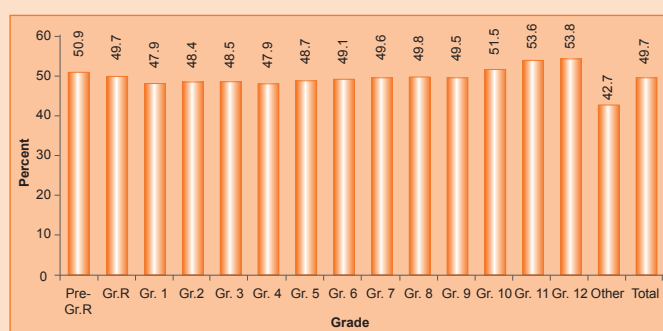
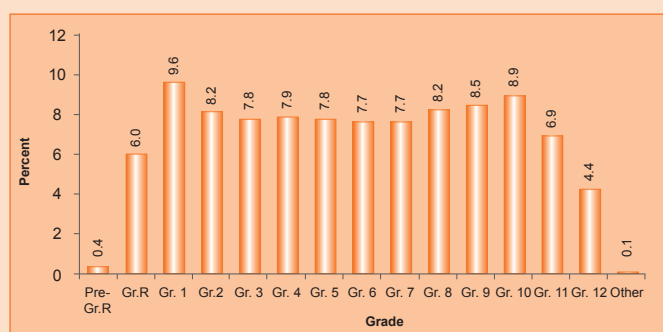


Figure 2 shows that, excluding “Other”, the lowest percentage of female learners in ordinary schools nationally was in Grades 1 and 4 (47.9% in each case) and the highest percentage was in Grade 12 (53.8%).

**Figure 3: Percentage distribution of learners in ordinary schools, by grade, in 2011**



As Figure 3 indicates, 9.6% of the learners in ordinary schools nationally were enrolled in Grade 1 and 4.4% were enrolled in Grade 12. This means that there were approximately two Grade 1 learners for every Grade 12 learner.

Table 5 reflects the following indicators:

(a) When counting all educators, the LER for ordinary public schools nationally was 30.3, while, when counting only state-paid educators in these schools, the LER increased to 32.2.

(b) The LSR for ordinary public schools nationally was 484.5, with three provinces (Gauteng, Mpumalanga and the Western Cape) higher than the national average.

**Table 5: Indicators for ordinary PUBLIC schools, by province, in 2011**

| Province            | LER                               |                                    | LSR          | ESR         |
|---------------------|-----------------------------------|------------------------------------|--------------|-------------|
|                     | State-paid and SGB-paid Educators | State-paid Educators <sup>1)</sup> |              |             |
| Eastern Cape        | 29.0                              | 30.4                               | 341.8        | 11.8        |
| Free State          | 27.6                              | 29.4                               | 467.7        | 16.9        |
| Gauteng             | 31.3                              | 34.8                               | 887.4        | 28.4        |
| KwaZulu-Natal       | 31.4                              | 32.9                               | 467.0        | 14.9        |
| Limpopo             | 29.6                              | 30.1                               | 418.7        | 14.2        |
| Mpumalanga          | 30.8                              | 32.1                               | 561.1        | 18.2        |
| Northern Cape       | 31.3                              | 33.4                               | 459.3        | 14.7        |
| North West          | 30.1                              | 31.8                               | 465.5        | 15.5        |
| Western Cape        | 30.3                              | 35.9                               | 668.7        | 22.1        |
| <b>South Africa</b> | <b>30.3</b>                       | <b>32.2</b>                        | <b>484.5</b> | <b>16.0</b> |

1) Underlying data not shown in publication.

(c) The ESR for ordinary public schools nationally was 16.0, with four provinces (the Free State, Gauteng, Mpumalanga and the Western Cape) higher than the national average.

**Figure 4: Frequency distribution of learners in ordinary PUBLIC schools in 2011**

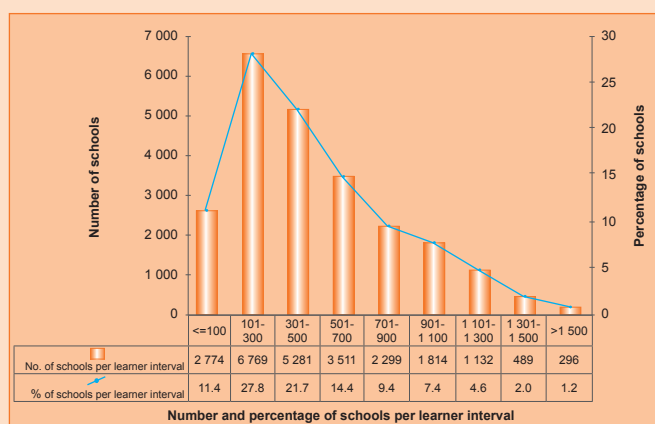


Figure 4, a histogram, shows that the highest number of ordinary public schools nationally (6 769, or 27.8%) was in the 101 to 300 learner interval. Furthermore, there were 2 774 schools (11.4%) and 296 schools (1.2%) in, respectively, the 100 and below learner interval and the above 1 500 learner interval.

**Figure 5: Frequency distribution of LER in ordinary PUBLIC schools in 2011**

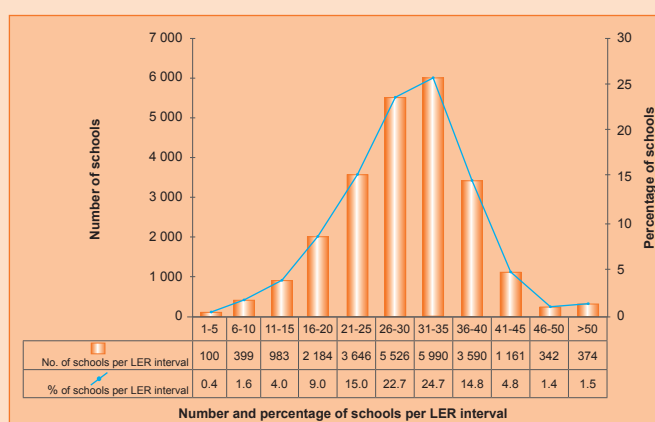


Figure 5, a histogram, reflects that the highest number of ordinary public schools nationally (5 990, or 24.7%) was in the 31 to 35 LER interval. Furthermore, there were 100 schools (0.4%) and 374 schools (1.5%) in, respectively, the one to five LER interval and the above 50 LER interval.