

1

Miri wa mina

nhloko



voko



nenge



xandla



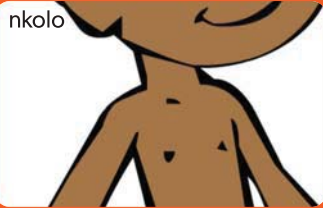
nkondzo



miri



nkolo



misisi



2

Switwi swa mina

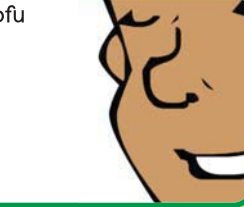
mahlo



tindleve



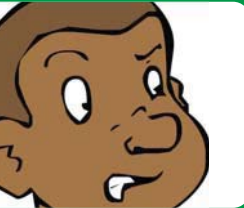
nhompfu



nomo



vona



twana



nuheta



ringa



3

Ndyangu wa ka mina

n'wana



sesi



buti



manana



papa



kokwani



kokwani wa xinuna



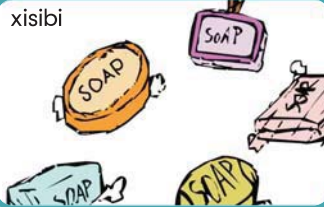
ndyangu



4

Ku tshama ku basile, u tayerile

xisibi



xisibi xo hlamba misisi



xisibi xo hlamba meno



thawula



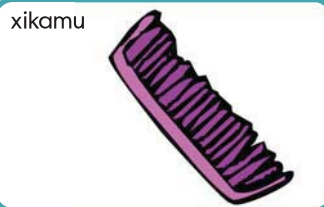
burachi



xiponci



xikamu



hlantswa



5

Ku dya swakudya leswi akaka

swakudya



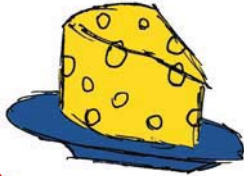
mihandzu



matsavu



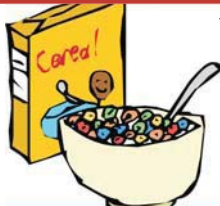
chizi



nyama



vuswa



swiwitsi



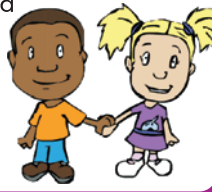
mati



6

Vanghana

munghana



hlayisa



nyikana



rirhandzu



xihundla



munghanankulu



tlanga



swo tlanga hi swona



7

Mina ndzi ambala leswi

rhoko



hembhe



maburuku



masokisi



titanghu



jazi



jesi



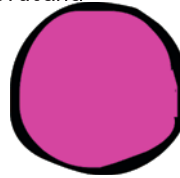
xirhangiso



8

Swivumbeko na mihlovo

xirhendzevutana



xikwere



yinlanharhu



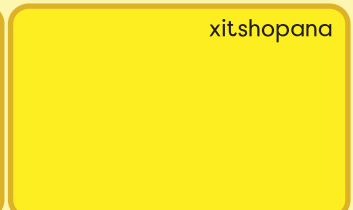
rhekitiengele



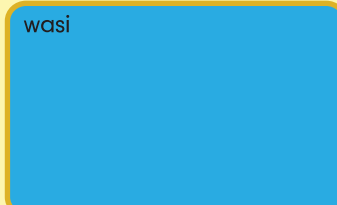
tshuka



xitshopana



wasi



rihlaza



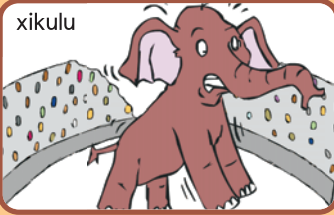
Tikhadi to dyodza ha tona

See page 19 of the Teacher's Guide for tips on how to use these flashcards.

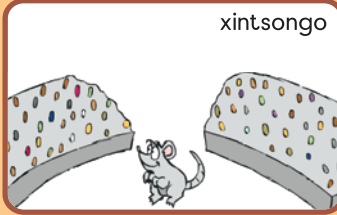
9

Maritofularha

xikulu



xintsongo



leha



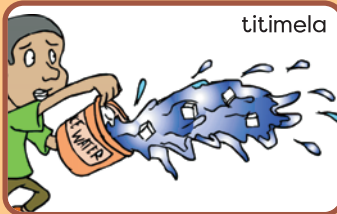
xo koma



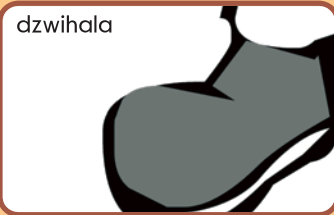
hisa



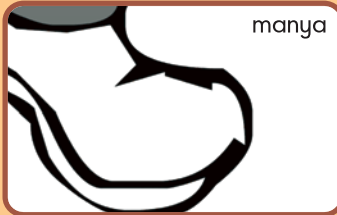
titimela



dzwihala



manya



10

Swirhapa na tinsikiti

xivungwana



xivungu



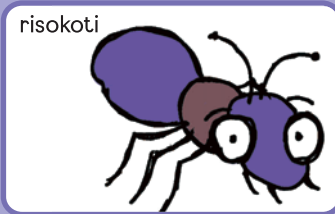
nyoxi



xipame



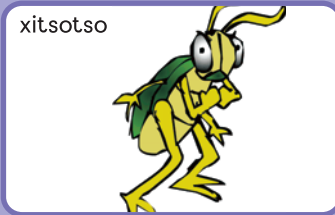
risokoti



xitsotswana



xitsotso



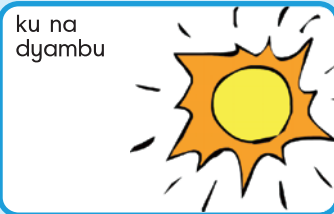
nsumba



11

Maxelo

ku na dyambu



mpfula



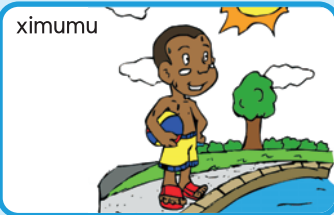
moya



mapapa



ximumu



xixikana



xixika



ximun'wana



12

Tshama u hlajisekile

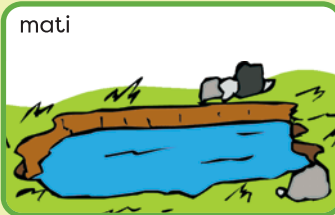
ku hlajiseka



a wu hlajisekanga



mati



ndzilo



chefu



gezi



xigevenga



nghozi



13

Xibakabaka

xibakabaka



vusiku



nhlikahi



dyambu



mapapa



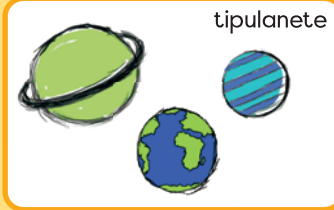
n[w]eti



tinyeleti



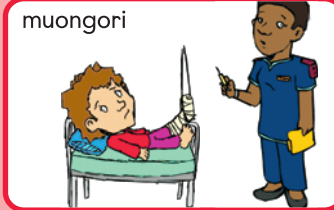
tipulanete



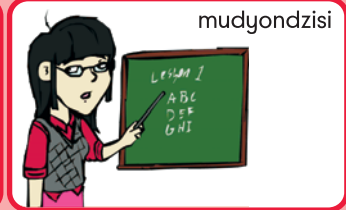
14

Va ndzhawu ya ka hina

muongori



mudyondzisi



switima ndzilo



phorisa



mufambisi wa mapapila



mutirhi wa le laviburari



vateki va thyaka



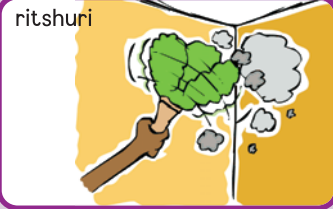
minisitara



15

Ku pfunana

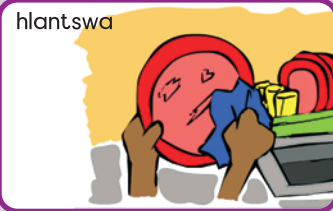
ritshuri



kukula



hlantswa



kala thyaka



basisa



rhwalela



longetela



pfuna



16

Vutomi byintshwa

ximanga lexitsongo



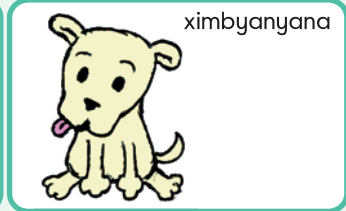
sekwa



swiciwana



ximbyanyana



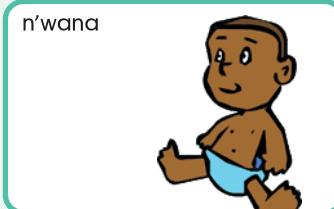
swiluva



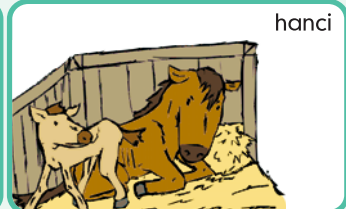
rhumbuka



n'wana



hanci



Tikhadi to dyodza ha tona

See page 19 of the Teacher's Guide for tips on how to use these flashcards.

17

Laha hi kono ndzi va tshamaka kona

yindlu



xihondzo



xijindlwana



xigurumbana



kamara yo etlela



xitanga



kamara yo wisela



kamara yo hlambela



18

Switwi

tsaka



vaviseka



hlundzuka



chava



tingungubyise



vilela



xivindzi



hlamala



19

Tiko ra mina ro saseka

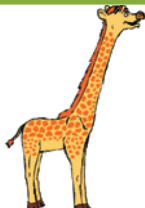
mpfuvu



nghala



nhutlwa



mhala



ndlopfu



ngwenya



n̄warimhondzorin'we



xinyamazana



20

Ku ya endleleni

thekisi



movha



xikanyakanya



bazi



xithuthuthu



xihahampfuka



xikwekwetsu



hanci

