

2009 School Realities

Published September 2009
ISBN: 978-1-77018-701-6
Enquiries: 012 312 5958

E
M
I
S

<http://www.education.gov.za>

In 2009, there were 12 214 845 learners in ordinary public and independent schools (hereinafter collectively referred to as ordinary schools) in South Africa, who attended 25 867 schools and were served by 411 164 educators (see Tables 2 and 3). These data are from the survey conducted on the 10th school day. Approximately 99% of functional ordinary schools submitted the survey forms (see Table 5 for provincial details). Except where otherwise indicated, all data are according to the new provincial demarcation boundaries. The figures in this publication are preliminary and the final figures will be published in the more comprehensive report, *Education Statistics in South Africa 2009*. No imputation was done on the data.

Table 1: List of abbreviations

ABET Adult Basic Education and Training	LER Learner-Educator Ratio
ECD Early Childhood Development	LSR Learner-School Ratio
ESR Educator-School Ratio	SGB School Governing Body
FET Further Education and Training	SNE Special Needs Education

Table 2: Number of learners, educators and schools in the ordinary school sector, by province, in 2009

Province	Public			Independent			Public and Independent					
	Learners	Educators	Schools	Learners	Educators	Schools	Learners	As % of National Total	Educators	As % of National Total	Schools	As % of National Total
Eastern Cape	2 032 198	67 409	5 668	44 202	2 211	140	2 076 400	17.0	69 620	16.9	5 808	22.5
Free State	642 234	23 583	1 547	14 520	781	64	656 754	5.4	24 364	5.9	1 611	6.2
Gauteng	1 720 243	54 586	1 970	183 595	11 765	420	1 903 838	15.6	66 351	16.1	2 390	9.2
KwaZulu-Natal	2 773 336	85 901	5 907	43 638	3 095	159	2 816 974	23.1	88 996	21.6	6 066	23.5
Limpopo	1 671 672	56 766	3 988	35 608	1 797	117	1 707 280	14.0	58 563	14.2	4 105	15.9
Mpumalanga	1 016 479	33 984	1 844	18 990	1 229	89	1 035 469	8.5	35 213	8.6	1 933	7.5
Northern Cape	264 857	8 888	600	2 852	227	17	267 709	2.2	9 115	2.2	617	2.4
North West	764 493	25 762	1 716	12 792	935	52	777 285	6.4	26 697	6.5	1 768	6.8
Western Cape	943 235	29 708	1 453	29 901	2 537	116	973 136	8.0	32 245	7.8	1 569	6.1
South Africa	11 828 747	386 587	24 693	386 098	24 577	1 174	12 214 845	100.0	411 164	100.0	25 867	100.0

Table 2 shows how many ordinary public and independent schools submitted data in 2009, and how many learners and educators there were in each. It further shows that the highest and lowest percentages of learners, educators and schools in the ordinary school sector occurred in KwaZulu-Natal and the Northern Cape, respectively.

Table 3: Number of learners, educators and schools in the ordinary school sector, by province, from 2007 to 2009

Province	Learners			Educators			Schools		
	2007	2008	2009	2007	2008	2009	2007	2008	2009
Eastern Cape	2 136 713	2 079 994	2 076 400	66 163	66 536	69 620	5 834	5 825	5 808
Free State	680 777	670 588	656 754	23 570	23 383	24 364	1 744	1 675	1 611
Gauteng	1 883 538	1 894 027	1 903 838	63 216	64 307	66 351	2 397	2 405	2 390
KwaZulu-Natal	2 848 652	2 771 420	2 816 974	88 042	86 983	88 996	6 057	5 938	6 066
Limpopo	1 816 230	1 764 669	1 707 280	54 769	57 083	58 563	4 140	4 122	4 105
Mpumalanga	1 054 085	1 051 531	1 035 469	32 276	33 644	35 213	1 973	1 959	1 933
Northern Cape	265 647	265 866	267 709	8 580	9 019	9 115	613	617	617
North West	747 248	779 260	777 285	25 701	26 620	26 697	1 780	1 784	1 768
Western Cape	968 327	962 008	973 136	31 908	33 378	32 245	1 527	1 550	1 569
South Africa	12 401 217	12 239 363	12 214 845	394 225	400 953	411 164	26 065	25 875	25 867

Sources:
2007: As published in the report *Education Statistics in South Africa 2007*.
2008: As published in the report *School Realities 2008*.

Table 3 reflects a decrease in both learner and school numbers from 2007 to 2009, but an increase in educator numbers for the same period.



education

Department:
Education
REPUBLIC OF SOUTH AFRICA

Table 4: Number of learners in ordinary schools, by province, school sector, gender and grade, in 2009

Province	School Sector	Gender	Pre-Grade R Phase	GET Band													
				Foundation Phase					Intermediate Phase				Senior Phase				Total (GET Band)
				Pre-Gr. R	Gr. R	Gr. 1	Gr. 2	Gr. 3	Total	Gr. 4	Gr. 5	Gr. 6	Total	Gr. 7	Gr. 8	Gr. 9	
Eastern Cape	Independent	Female	849	1 403	1 814	1 680	1 660	6 557	1 637	1 554	1 670	4 861	1 499	1 583	1 341	4 423	15 841
		Total	1 611	2 776	3 684	3 549	3 395	13 404	3 364	3 207	3 244	9 815	2 970	3 034	2 743	8 747	31 966
	Public	Female	5 938	76 055	98 433	86 197	84 645	345 330	85 285	85 304	83 978	254 567	80 728	75 965	69 522	226 215	826 112
		Total	11 599	151 738	205 000	179 461	177 499	713 698	179 899	175 117	169 405	524 421	160 397	149 701	135 677	445 775	1 683 894
	Both	Female	6 787	77 458	100 247	87 877	86 305	351 887	86 922	86 858	85 648	259 428	82 227	77 548	70 863	230 638	841 953
		Total	13 210	154 514	208 684	183 010	180 894	727 102	183 263	178 324	172 649	534 236	163 367	152 735	138 420	454 522	1 715 860
Free State	Independent	Female	180	256	566	537	519	1 878	493	535	630	1 658	544	646	608	1 798	5 334
		Total	360	473	1 216	1 103	1 006	3 798	1 014	1 126	1 147	3 287	1 152	1 211	1 193	3 556	10 641
	Public	Female	326	11 298	26 778	25 622	25 062	88 760	25 459	25 062	26 379	76 900	25 474	24 462	26 134	76 070	241 730
		Total	644	23 294	56 115	52 781	51 281	183 471	52 665	51 235	53 230	157 130	51 249	49 613	54 631	155 493	496 094
	Both	Female	506	11 554	27 344	26 159	25 581	90 638	25 952	25 597	27 009	78 558	26 018	25 108	26 742	77 868	247 064
		Total	1 004	23 767	57 331	53 884	52 287	187 269	53 679	52 361	54 377	160 417	52 401	50 824	55 824	159 049	506 735
Gauteng	Independent	Female	2 714	4 540	8 206	7 444	7 119	27 309	6 964	6 600	6 428	19 992	6 359	8 163	7 223	21 745	69 046
		Total	5 501	9 133	16 433	15 048	14 153	54 767	13 591	12 903	12 678	39 172	12 595	15 409	13 936	41 940	135 879
	Public	Female	2 320	27 680	75 987	71 243	70 478	245 388	68 796	70 121	72 663	211 580	73 157	72 031	65 422	210 610	667 578
		Total	4 668	55 802	157 253	145 109	143 218	501 382	140 192	141 015	144 950	426 157	144 581	142 178	132 089	418 848	1 346 387
	Both	Female	5 034	32 220	84 193	78 687	77 597	272 697	75 760	76 721	79 091	231 572	79 516	80 194	72 645	232 355	736 624
		Total	10 169	64 935	173 686	160 157	157 371	556 149	153 783	153 918	157 628	465 329	157 176	157 587	146 025	460 788	1 482 266
KwaZulu-Natal	Independent	Female	890	1 334	1 801	1 736	1 555	6 426	1 430	1 352	1 419	4 201	1 522	2 530	1 714	5 766	16 393
		Total	1 683	2 597	3 519	3 308	2 985	12 409	2 718	2 648	2 629	7 995	2 893	4 608	3 195	10 696	31 100
	Public	Female	4 107	75 693	121 606	107 046	107 512	411 857	108 061	108 685	109 418	326 164	113 705	122 724	100 019	336 448	1 074 469
		Total	8 087	152 069	255 548	222 656	223 676	853 949	224 195	223 048	223 546	670 789	227 533	243 455	199 407	670 395	2 195 133
	Both	Female	4 997	77 027	123 407	108 782	109 067	418 283	109 491	110 037	110 837	330 365	115 227	125 254	101 733	342 214	1 090 862
		Total	9 770	154 666	259 067	225 964	226 661	866 358	226 913	225 696	226 175	678 784	230 426	248 063	202 602	681 091	2 226 233
Limpopo	Independent	Female	561	975	1 395	1 278	1 174	4 822	1 313	1 207	1 292	3 812	1 275	1 599	1 317	4 191	12 825
		Total	1 131	2 062	2 726	2 565	2 446	9 799	2 654	2 512	2 568	7 734	2 390	2 941	2 470	7 801	25 334
	Public	Female	1 070	47 248	58 245	56 176	58 758	220 427	62 992	64 832	67 590	195 414	61 743	64 193	68 060	193 996	609 837
		Total	2 063	95 508	121 460	117 786	123 288	458 042	132 897	135 420	137 166	405 483	125 309	131 822	140 984	398 115	1 261 640
	Both	Female	1 631	48 223	59 640	57 454	59 932	225 249	64 305	66 039	68 882	199 226	63 018	65 792	69 377	198 187	622 662
		Total	3 194	97 570	124 186	120 351	125 734	467 841	135 551	137 932	139 734	413 217	127 699	134 763	143 454	405 916	1 286 974
Mpumalanga	Independent	Female	373	667	878	807	758	3 110	767	710	747	2 224	671	484	494	1 649	6 983
		Total	780	1 343	1 790	1 601	1 531	6 265	1 463	1 487	1 418	4 368	1 256	1 043	1 031	3 330	13 963
	Public	Female	1 384	22 236	41 540	38 728	40 625	143 129	40 889	41 606	42 735	125 230	39 033	41 540	38 162	118 735	387 094
		Total	2 744	44 851	87 304	80 631	84 040	296 826	85 425	85 908	85 805	257 138	78 635	84 407	76 027	239 069	793 033
	Both	Female	1 757	22 903	42 418	39 535	41 383	146 239	41 656	42 316	43 482	127 454	39 704	42 024	38 656	120 384	394 077
		Total	1 767	23 291	46 676	42 697	44 188	156 852	45 232	45 079	43 741	134 052	40 187	43 426	38 402	122 015	412 919
Northern Cape	Independent	Female	26	71	122	107	88	388	83	79	79	241	79	195	205	479	1 108
		Total	56	125	255	199	194	773	170	157	149	476	153	314	322	789	2 038
	Public	Female	488	5 593	12 253	11 414	11 655	40 915	11 610	11 153	11 452	34 215	10 462	10 452	9 837	30 751	105 881
		Total	929	11 383	25 406	23 417	23 655	83 861	24 379	22 658	22 990	70 027	21 105	21 171	19 964	62 240	216 128
	Both	Female	514	5 664	12 375	11 521	11 743	41 303	11 693	11 232	11 531	34 456	10 541	10 647	10 042	31 230	106 989
		Total	985	11 508	25 661	23 616	23 849	84 634	24 549	22 815	23 139	70 503	21 258	21 485	20 286	63 029	218 166
North West	Independent	Female	210	398	607	646	594	2 245	548	474	482	1 504	494	536	459	1 489	5 238
		Total	406	802	1 229	1 243	1 143	4 417	1 119	946	949	3 014	925	1 038	889	2 852	10 283
	Public	Female	469	14 647	34 433	32 980	32 873	114 933	32 827	31 467	30 579	94 873	29 161	31 489	29 464	90 114	299 920
		Total	935	29 372	72 749	68 567	67 621	238 309	67 759	64 360	61 739	193 858	58 436	61 657	58 699	178 792	610 959
	Both	Female	679	15 045	35 040	33 626	33 467	117 178	33 375	31 941	31 061	96 377	29 655	32 025	29 923	91 603	305 158
		Total	1 341	30 174	73 978	69 810	68 764	242 726	68 878	65 306	62 688	196 872	59 361	62 695	59 588	181 644	621 242
Western Cape	Independent	Female	892	912	1 238	1 099	1 083	4 332	1 059	1 011	1 080	3 150	1 063	1 270	1 170	3 503	10 985
		Total	1 618	1 705	2 429	2 200	2 113	8 447	2 095	1 997	2 072	6 164	1 982	2 437	2 293	6 712	21 323
	Public	Female	569	17 622	43 586	40 087	39 496	140 791	40 149	40 515	43 393	124 057	38 614	37 783	40 441	116 838	381 686
		Total	1 165	35 190	91 070	81 847	80 150	288 257	82 851	82 184	85 420	250 455	75 958	73 570	79 867	229 395	768 107
	Both	Female	1 461	18 534	44 824	41 186	40 579	145 123	41 208	41 526	44 473	127 207	39 677	39 053	41 611	120 341	392 671
		Total	2 783	36 895	93 499	84 047	82 263	296 704	84 946	84 181	87 492	256 619	77 940	76 007	82 160	236 107	789 430
South Africa	Independent	Female	6 695	10 556	16 627	15 334	14 550	57 067	14 294	13 522	13 827	41 643	13 506	17 006	14 531	45 043	143 753
		Total	13 146	21 016	33 281	30 816	28 966	114 079	28 188	26 983	26 854	82 025	26 316	32 035	28 072	86 423	282 527
	Public	Female	16 671	298 072	512 861	469 493	471 104	1 751 530	476 068	478 745	488 187	1 443 000	472 077	480 639	447 061	1 399 777	4 594 307
		Total	32 834	599 207	1 071 905	972 255	974 428	3 617 795	990 262	980 945	984 251	2 955 458	943 203	957 574	897 345	2 798 122	9 371 375
	Both	Female	23 366	308 628	529 488	484 827	485 654	1 808 597	490 362	492 267	502 014	1 484 643	485 583	497 645	461 592	1 444 820	4 738 060
		Total	45 980	620 223	1 105 186	1 003 071	1 003 394	3 731 874	1 018 450	1 007 928	1 011 105	3 037 483	969 519	989 609	925 417	2 884 545	9 653 902

Note 1: Data exclude learners at stand-alone ECD sites, special schools,

E M I S

Province	School Sector	Gender	FET Band				Other			Total Primary (Gr. 1-7)	Total Secondary (Gr. 8-12)	Total (Gr. 1-12)	Grand Total
			Gr. 10	Gr. 11	Gr. 12	Total	SNE 1)	Post-Matric	Total				
Eastern Cape	Independent	Female	1 676	1 749	1 912	5 337	4	459	463	11 514	8 261	19 775	22 490
		Total	3 211	3 231	3 410	9 852	9	764	773	23 413	15 629	39 042	44 202
	Public	Female	79 097	65 446	40 196	184 739	637	1	638	604 570	330 226	934 796	1 017 427
		Total	147 161	116 416	71 476	335 053	1 649	3	1 652	1 246 778	620 431	1 867 209	2 032 198
	Both	Female	80 773	67 195	42 108	190 076	641	460	1 101	616 084	338 487	954 571	1 039 917
		Total	69 599	52 452	32 778	154 829	1 017	307	1 324	654 107	297 573	951 680	1 036 483
		Total	150 372	119 647	74 886	344 905	1 658	767	2 425	1 270 191	636 060	1 906 251	2 076 400
Free State	Independent	Female	635	605	515	1 755	0	4	4	3 824	3 009	6 833	7 273
		Total	1 384	1 180	950	3 514	0	5	5	7 764	5 918	13 682	14 520
	Public	Female	31 107	24 773	15 654	71 534	2 549	0	2 549	179 836	122 130	301 966	316 139
		Total	62 615	47 301	29 338	139 254	6 242	0	6 242	368 556	243 498	612 054	642 234
	Both	Female	31 742	25 378	16 169	73 289	2 549	4	2 553	183 660	125 139	308 799	323 412
		Total	32 257	23 103	14 119	69 479	3 693	1	3 694	192 660	124 277	316 937	333 342
		Total	63 999	48 481	30 288	142 768	6 242	5	6 247	376 320	249 416	625 736	656 754
Gauteng	Independent	Female	7 268	7 544	7 102	21 914	63	120	183	49 120	37 300	86 420	93 857
		Total	14 055	14 427	13 345	41 827	176	212	388	97 401	71 172	168 573	183 595
	Public	Female	71 754	66 953	49 782	188 489	871	60	931	502 445	325 942	828 387	859 318
		Total	148 571	128 750	91 047	366 368	2 660	160	2 820	1 016 318	640 635	1 656 953	1 720 243
	Both	Female	79 022	74 497	56 884	210 403	934	180	1 114	551 565	363 242	914 807	953 175
		Total	83 604	66 680	47 508	197 792	1 902	192	2 094	562 154	348 565	910 719	950 663
		Total	162 626	141 177	104 392	408 195	2 836	372	3 208	1 113 719	711 807	1 825 526	1 903 838
KwaZulu-Natal	Independent	Female	1 663	1 894	2 357	5 914	14	97	111	10 815	10 158	20 973	23 308
		Total	3 090	3 409	4 173	10 672	54	129	183	20 700	18 475	39 175	43 638
	Public	Female	106 761	110 259	76 384	293 404	1 433	45	1 478	776 033	516 147	1 292 180	1 373 458
		Total	215 438	209 682	140 761	565 881	4 148	87	4 235	1 600 202	1 008 743	2 608 945	2 773 336
	Both	Female	108 424	112 153	78 741	299 318	1 447	142	1 589	786 848	526 305	1 313 153	1 396 766
		Total	110 104	100 938	66 193	277 235	2 755	74	2 829	834 054	500 913	1 334 967	1 420 208
		Total	218 528	213 091	144 934	576 553	4 202	216	4 418	1 620 902	1 027 218	2 648 120	2 816 974
Limpopo	Independent	Female	1 262	1 547	2 146	4 955	44	4	48	8 934	7 871	16 805	18 389
		Total	2 442	2 788	3 790	9 020	109	14	123	17 861	14 431	32 292	35 608
	Public	Female	83 625	79 284	51 573	214 482	14	0	14	430 336	346 735	777 071	825 403
		Total	168 634	145 359	93 936	407 929	40	0	40	893 326	680 735	1 574 061	1 671 672
	Both	Female	84 887	80 831	53 719	219 437	58	4	62	439 270	354 606	793 876	843 792
		Total	86 189	67 316	44 007	197 512	91	10	101	471 917	340 560	812 477	863 488
		Total	171 076	148 147	97 726	416 949	149	14	163	911 187	695 166	1 606 353	1 707 280
Mpumalanga	Independent	Female	578	635	893	2 106	11	0	11	5 338	3 084	8 422	9 473
		Total	1 141	1 310	1 771	4 222	25	0	25	10 546	6 296	16 842	18 990
	Public	Female	44 909	40 615	29 588	115 112	249	8	257	285 156	194 814	479 970	503 847
		Total	88 668	76 406	54 965	220 039	643	20	663	587 748	380 473	968 221	1 016 479
	Both	Female	45 487	41 250	30 481	117 218	260	8	268	290 494	197 898	488 392	513 320
		Total	44 322	36 466	26 255	107 043	408	12	420	307 800	188 871	496 671	522 149
		Total	89 809	77 716	56 736	224 261	668	20	688	598 294	386 769	985 063	1 035 469
Northern Cape	Independent	Female	189	155	133	477	0	0	0	637	877	1 514	1 611
		Total	285	249	224	758	0	0	0	1 277	1 394	2 671	2 852
	Public	Female	10 700	8 533	5 790	25 023	57	0	57	79 999	45 312	125 311	131 449
		Total	21 136	15 819	10 709	47 664	136	0	136	163 610	88 799	252 409	264 857
	Both	Female	10 889	8 688	5 923	25 500	57	0	57	80 636	46 189	126 825	133 060
		Total	10 532	7 380	5 010	22 922	79	0	79	84 251	44 004	128 255	134 649
		Total	21 421	16 068	10 933	48 422	136	0	136	164 887	90 193	255 080	267 709
North West	Independent	Female	391	395	357	1 143	6	14	20	3 845	2 138	5 983	6 611
		Total	717	701	646	2 064	12	27	39	7 554	3 991	11 545	12 792
	Public	Female	32 924	28 181	17 581	78 686	211	54	265	224 320	139 639	363 959	379 340
		Total	67 361	51 850	32 708	151 919	626	54	680	461 231	272 275	733 506	764 493
	Both	Female	33 315	28 576	17 938	79 829	217	68	285	228 165	141 777	369 942	385 951
		Total	34 763	23 975	15 416	74 154	421	13	434	240 620	134 489	375 109	391 334
		Total	68 078	52 551	33 354	153 983	638	81	719	468 785	276 266	745 051	777 285
Western Cape	Independent	Female	1 207	1 154	1 258	3 619	13	12	25	7 633	6 059	13 692	15 521
		Total	2 355	2 214	2 322	6 891	37	32	69	14 888	11 621	26 509	29 901
	Public	Female	36 275	34 701	25 163	96 139	163	0	163	285 840	174 363	460 203	478 557
		Total	68 096	61 423	44 055	173 574	389	0	389	579 480	327 011	906 491	943 235
	Both	Female	37 482	35 855	26 421	99 758	176	12	188	293 473	180 422	473 895	494 078
		Total	32 969	27 782	19 956	80 707	250	20	270	300 895	158 210	459 105	479 058
		Total	70 451	63 637	46 377	180 465	426	32	458	594 368	338 632	933 000	973 136
South Africa	Independent	Female	14 869	15 678	16 673	47 220	155	710	865	101 660	78 757	180 417	198 533
		Total	13 811	13 831	13 958	41 600	267	473	740	99 744	70 170	169 914	187 565
	Public	Female	28 680	29 509	30 631	88 820	422	1 183	1 605	201 404	148 927	350 331	386 098
		Total	497 152	458 745	311 711	1 267 608	6 184	168	6 352	3 368 535	2 195 308	5 563 843	5 884 938
	Both	Female	490 528	392 261	257 284	1 140 073	10 349	156	10 505	3 548 714	2 067 292	5 616 006	5 943 809
		Total	987 680	851 006	568 995	2 407 681	16 533	324	16 857	6 917 249	4 262 600	11 179 849	11 828 747
		Total	512 021	474 423	328 384	1 314 828	6 339	878	7 217	3 470 195	2 274 065	5 744 260	6 083 471
		Total	504 339	406 092	271 242	1 181 673	10 616	629	11 245	3 648 458	2 137 462	5 785 920	6 131 374
		Total	1 016 360	880 515	599 626	2 496 501	16 955	1 507	18 462	7 118 653	4 411 527	11 530 180	12 214 845

Note 1: Data exclude learners at stand-alone ECD sites, special schools, ABET centres and FET colleges.

Note 2: Owing to a shortage of space in the table, the male enrolment figures for ordinary public and independent schools are intentionally omitted in the provincial data, but are included in the national data.

1) SNE learners in separate classes. (These are not the only SNE learners in the ordinary school sector, but the other SNE learners are included in mainstream classes).

Table 5: Percentage return rate of survey forms in ordinary schools, by province, in 2009

Province	Public	Independent	Public and Independent
Eastern Cape	99.9	84.5	99.4
Free State	94.5	84.6	94.1
Gauteng	100.0	100.0	100.0
KwaZulu-Natal	99.4	70.3	98.3
Limpopo	99.1	100.0	99.2
Mpumalanga	100.0	100.0	100.0
Northern Cape	100.0	100.0	100.0
North West	99.2	96.3	99.2
Western Cape	100.0	79.1	97.7
South Africa	99.3	89.3	98.8

Table 5 shows that three provinces (Gauteng, Mpumalanga and the Northern Cape) had a 100% return rate of survey forms for both ordinary public and independent schools, while Limpopo and the Western Cape had a 100% return rate for ordinary independent schools and ordinary public schools, respectively.

Figure 1: Percentage distribution of female learners in ordinary schools, by grade, in 2009

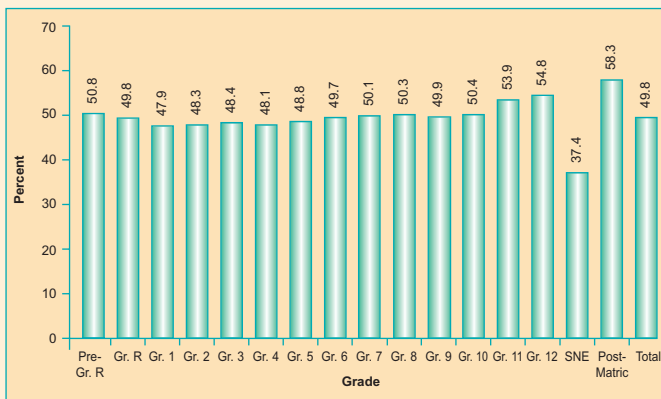
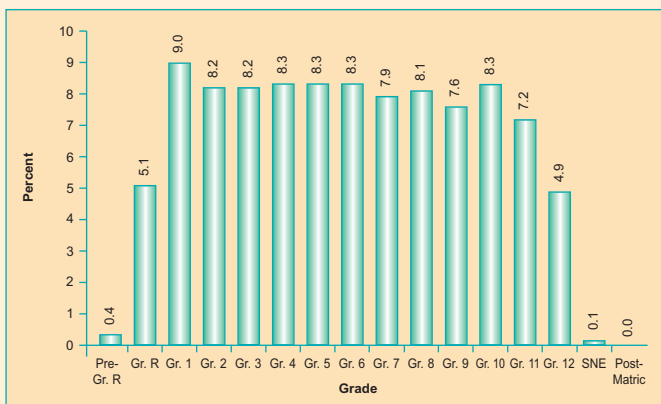


Figure 1 shows that the lowest percentage of female learners (47.9%) was in Grade 1 and the highest percentage (54.8%) was in Grade 12.

Figure 2: Percentage distribution of learners in ordinary schools, by grade, in 2009



As Figure 2 indicates, 9.0% of the learners were enrolled in Grade 1 and 4.9% were enrolled in Grade 12. This means that for every Grade 12 learner there were approximately two Grade 1 learners.

Table 6: Comparative data of learners in ordinary schools, by province, from 2003 to 2009

Province	Old Demarcation			New Demarcation			
	2003	2004	2005	2006	2007	2008	2009
Eastern Cape	2 116 426	2 150 308	2 206 575	2 100 425	2 136 713	2 079 994	2 076 400
Free State	696 155	690 490	689 189	685 971	680 777	670 588	656 754
Gauteng	1 661 817	1 697 908	1 745 262	1 863 375	1 883 538	1 894 027	1 903 838
KwaZulu-Natal	2 783 051	2 718 176	2 719 966	2 768 015	2 848 652	2 771 420	2 816 974
Limpopo	1 816 852	1 893 626	1 906 402	1 771 320	1 816 230	1 764 669	1 707 280
Mpumalanga	914 739	934 786	914 212	1 092 382	1 054 085	1 051 531	1 035 469
Northern Cape	202 010	209 000	210 152	261 736	265 647	265 866	267 709
North West	891 036	903 379	845 942	772 044	747 248	779 260	777 285
Western Cape	956 836	978 718	980 065	978 517	968 327	962 008	973 136
South Africa	12 038 922	12 176 391	12 217 765	12 293 785	12 401 217	12 239 363	12 214 845

Sources:

2003-2007: As published in the reports *Education Statistics in South Africa at a Glance* and *Education Statistics in South Africa*.

2008: As published in the report *School Realities 2008*.

Nationally, an upward trend in learner numbers is reflected for the period 2003 to 2007, followed by a downward trend towards 2009 (see Table 6 and Figure 3).

Figure 3: Trend line of national learners in ordinary schools from 2003 to 2009

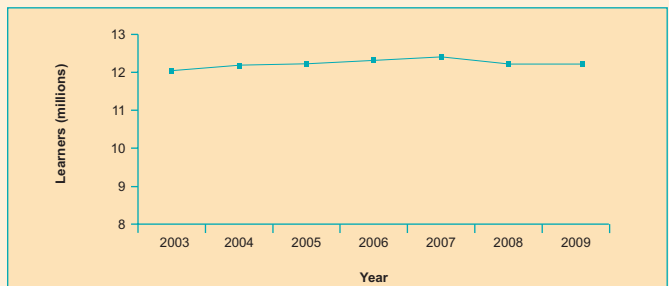


Table 7: Indicators for ordinary public schools, by province, in 2009

Province	LER		LSR	ESR
	State-Paid and SGB-Paid Educators	State-Paid Educators		
Eastern Cape	30.1	31.4	359	11.9
Free State	27.2	28.8	415	15.2
Gauteng	31.5	35.1	873	27.7
KwaZulu-Natal	32.3	34.2	469	14.5
Limpopo	29.4	30.1	419	14.2
Mpumalanga	29.9	31.3	551	18.4
Northern Cape	29.8	31.5	441	14.8
North West	29.7	31.5	446	15.0
Western Cape	31.8	37.7	649	20.4
South Africa	30.6	32.6	479	15.7

Table 7 reflects the following indicators:

(a) When counting all educators, the learner-educator ratio for ordinary public schools nationally was 30.6, while, when counting only state-paid educators in these schools, the learner-educator ratio increased to 32.6.

(b) The learner-school ratio for ordinary public schools nationally was 479, with three provinces (Gauteng, Mpumalanga and the Western Cape) higher than the national average.

(c) The educator-school ratio for ordinary public schools nationally was 15.7, with the same three provinces as in (b) (Gauteng, Mpumalanga and the Western Cape) higher than the national average.